

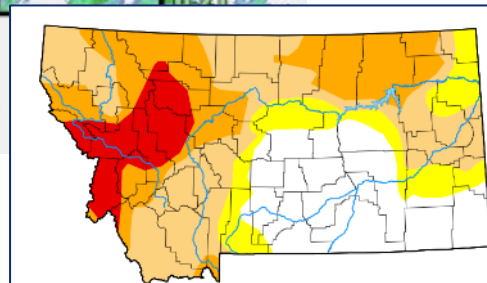
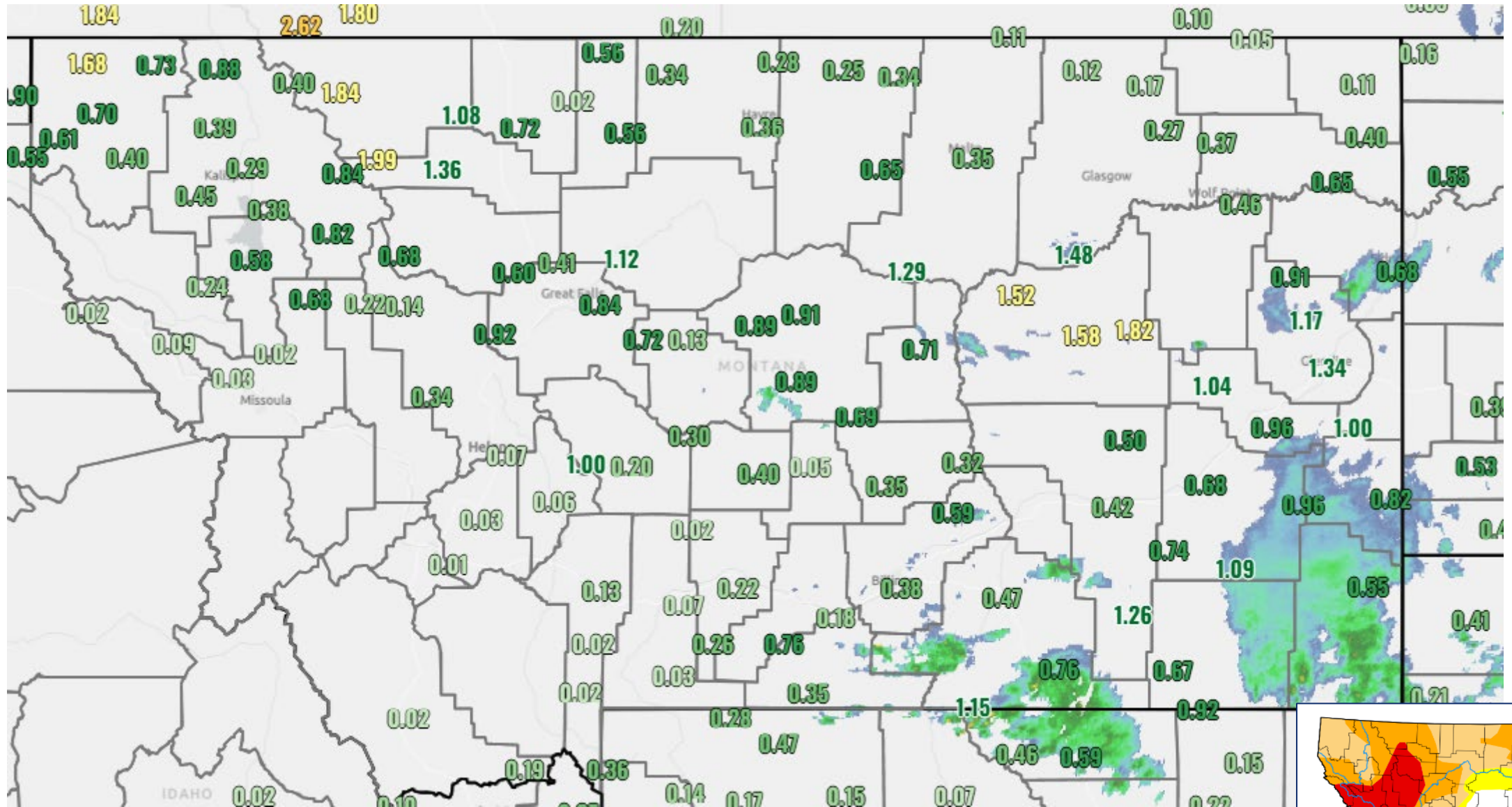


*Photos submitted to the Montana Drought Impact Reporter, July 7, 2025
Dawson County.*

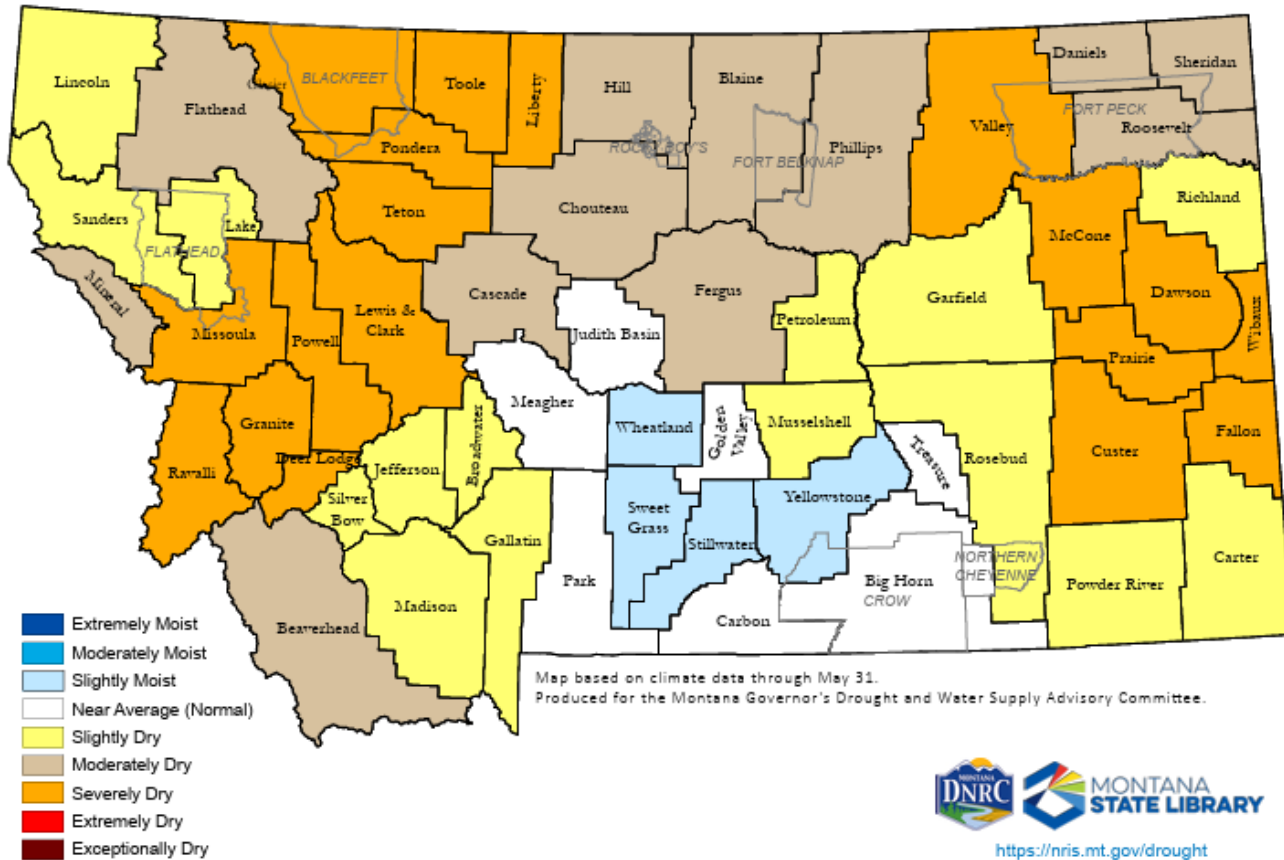
MT Drought Status: Current Conditions

Troy Blandford July 16, 2025
Prepared for the Montana Drought and Water Supply Advisory Committee

48-hour Precipitation Observations – 7/15/2025



Montana Drought Status by County- June 3, 2025



Spring Season Recap

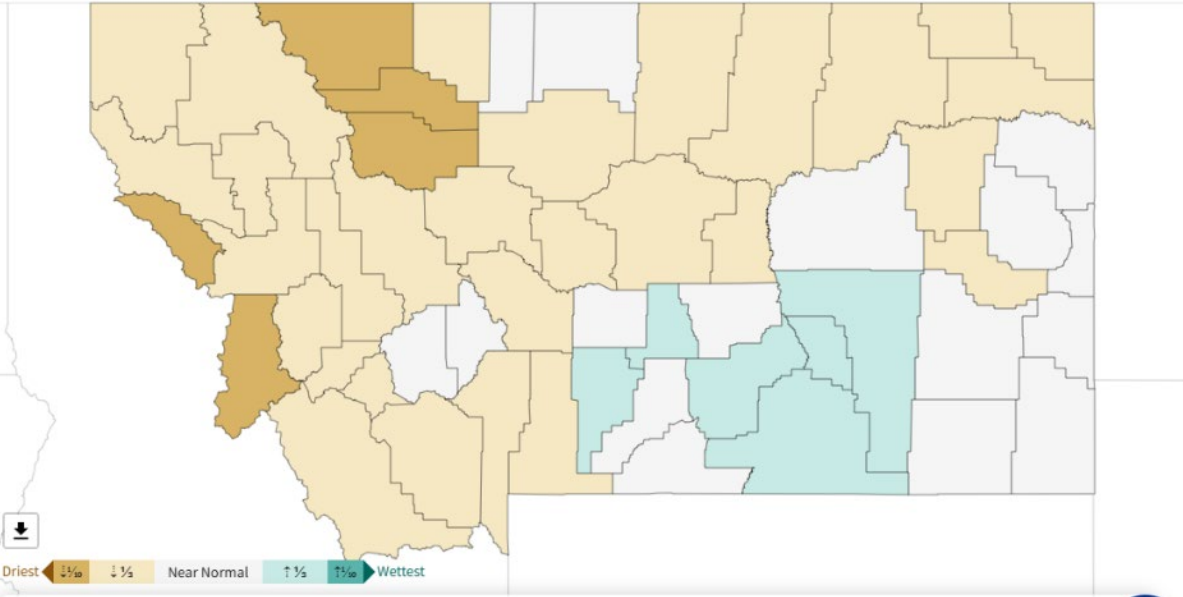
- Exceptionally hot and dry conditions last Fall started the year in a deficit (Sept. – Dec. warmest on record).
- **March/April** – Average to above avg. snowpack in Feb. followed by early thaw in March, esp. low elevations.
- **May** – Earlier than normal snowmelt statewide.
- **June** – Below avg. precipitation in west, north-central, and northeast. Avg. to slightly above in central and southeast.

County Precipitation Rank

April - June

County Precipitation Rank (131 years)

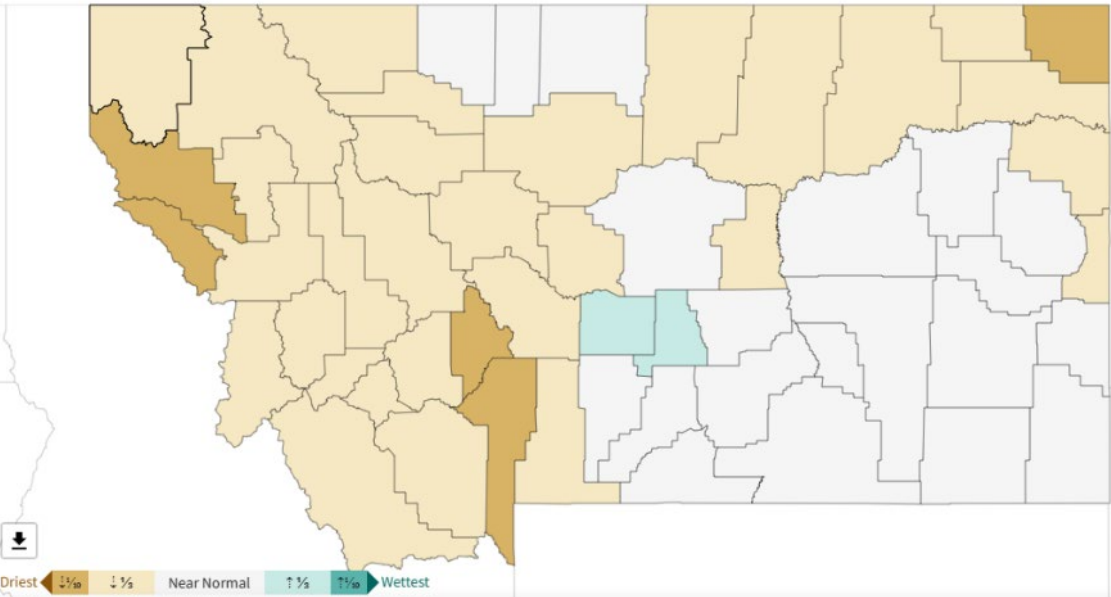
April - June 2025



June

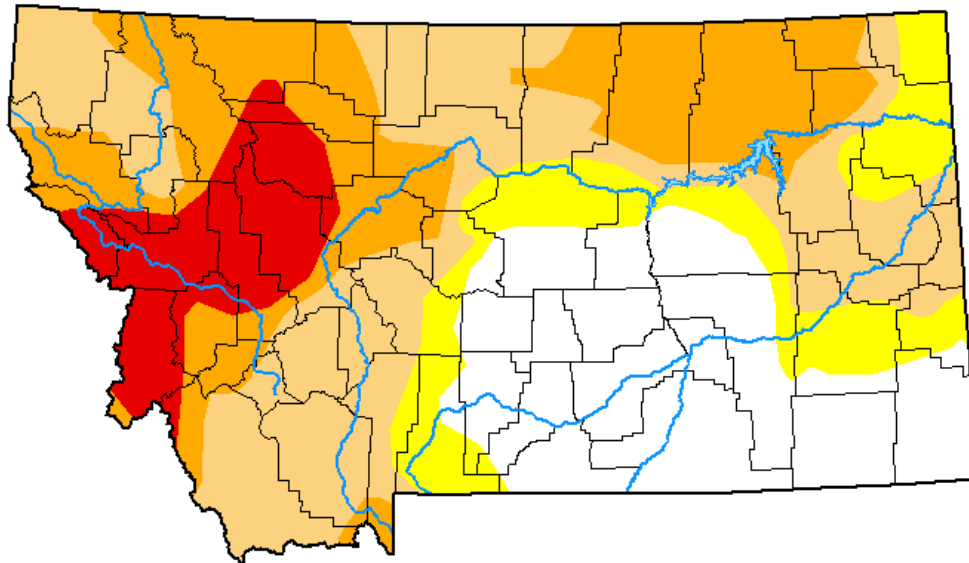
County Precipitation Rank (131 years)

Ju

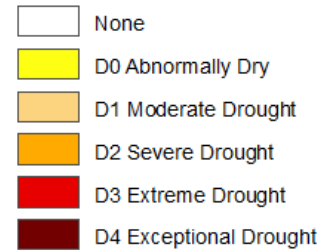


U.S. Drought Monitor Montana

July 8, 2025
(Released Thursday, Jul. 10, 2025)
Valid 8 a.m. EDT



Intensity:



The Drought Monitor focuses on broad-scale conditions. Local conditions may vary. For more information on the Drought Monitor, go to <https://droughtmonitor.unl.edu/About.aspx>

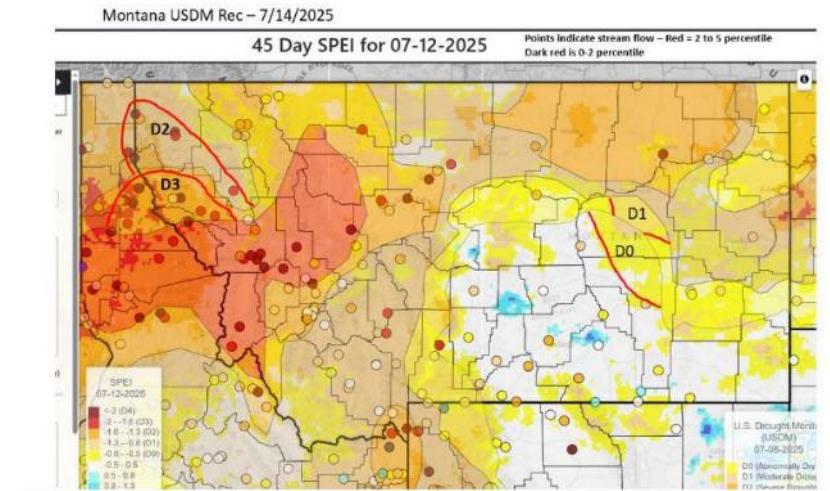
Author:

Brad Pugh
CPC/NOAA



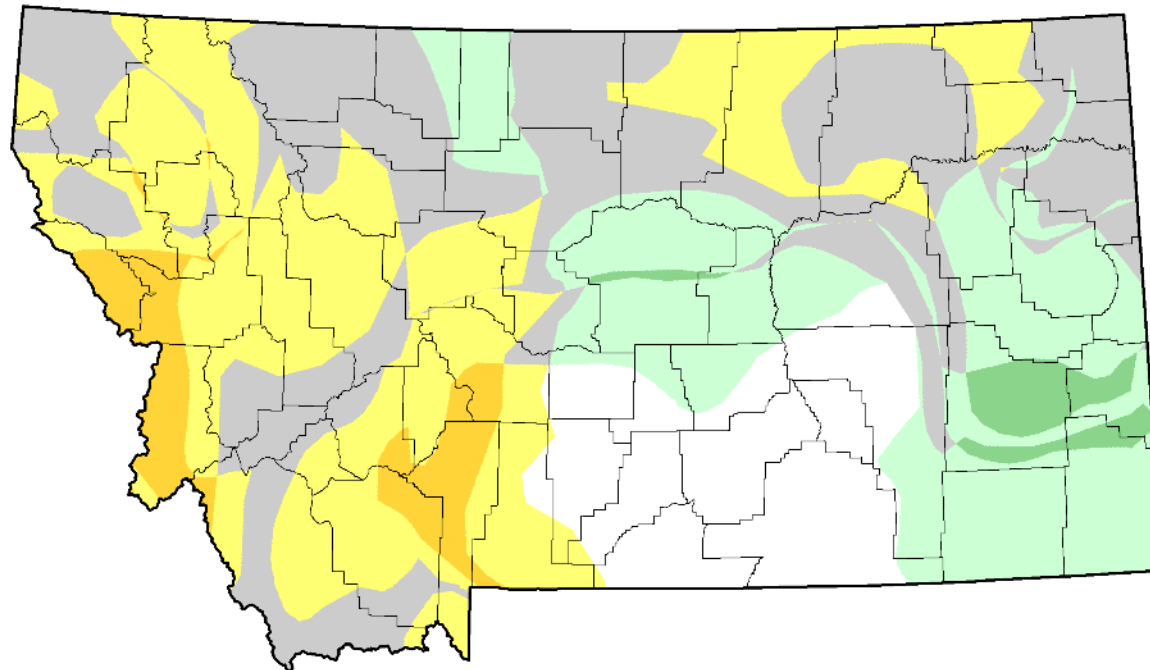
droughtmonitor.unl.edu

MT proposed changes to the USDM week of 7/14



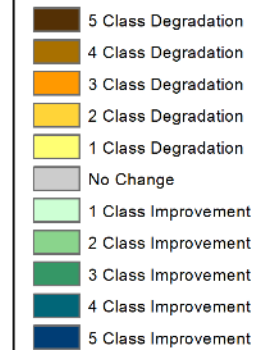
Drought Monitor Change

U.S. Drought Monitor Class Change - Montana 4 Week



July 8, 2025
compared to
June 10, 2025

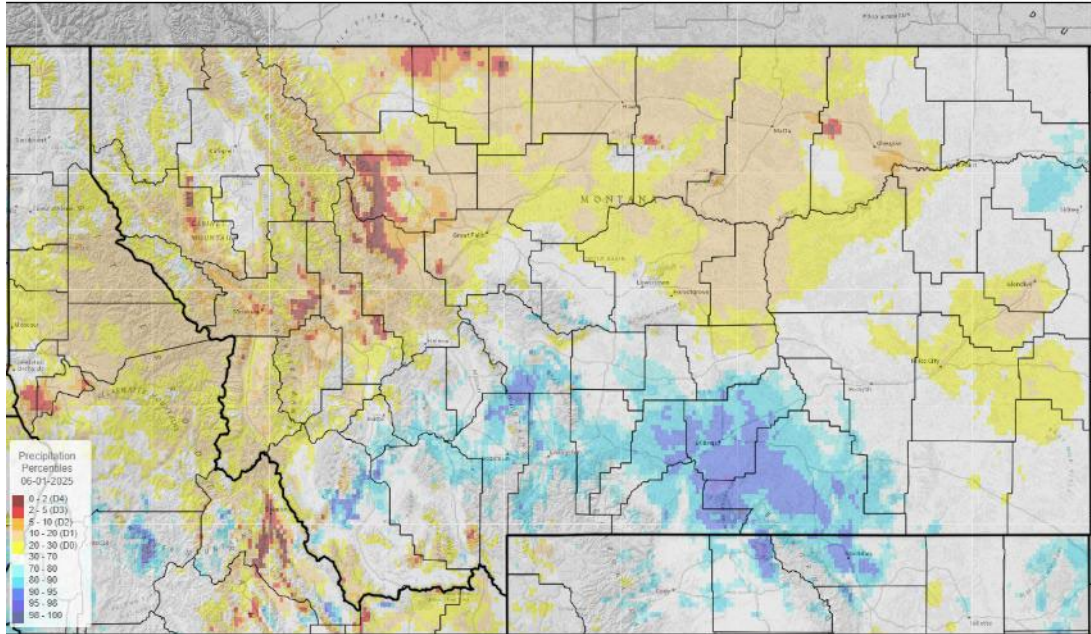
droughtmonitor.unl.edu



Water Year Precipitation

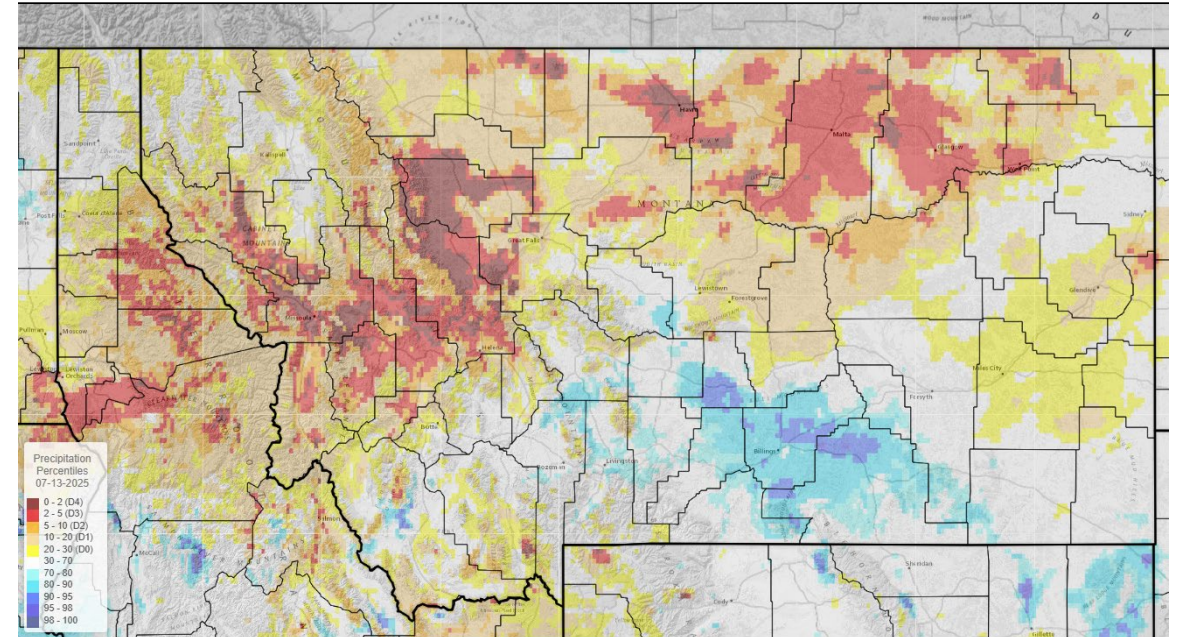
06-01-2025

Water Year Percentile for 06-01-2025



07-13-2025

Water Year Percentile for 07-13-2025



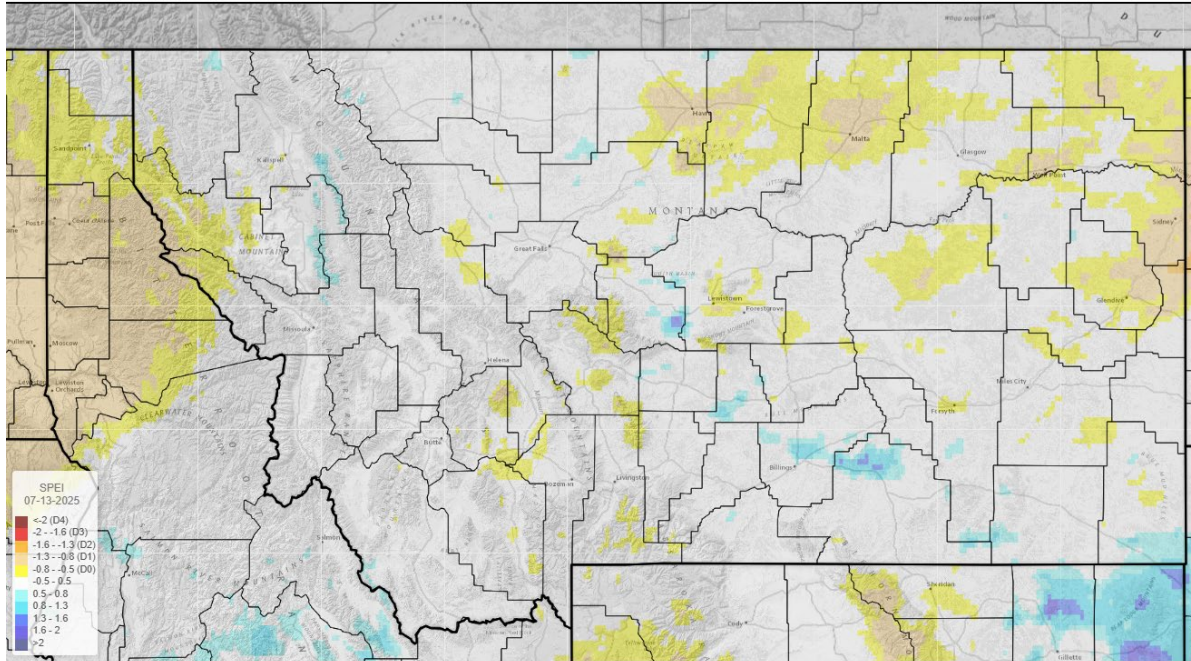
UMRB Drought Indicators Dashboard

<https://drought.climate.umt.edu/>

Precipitation

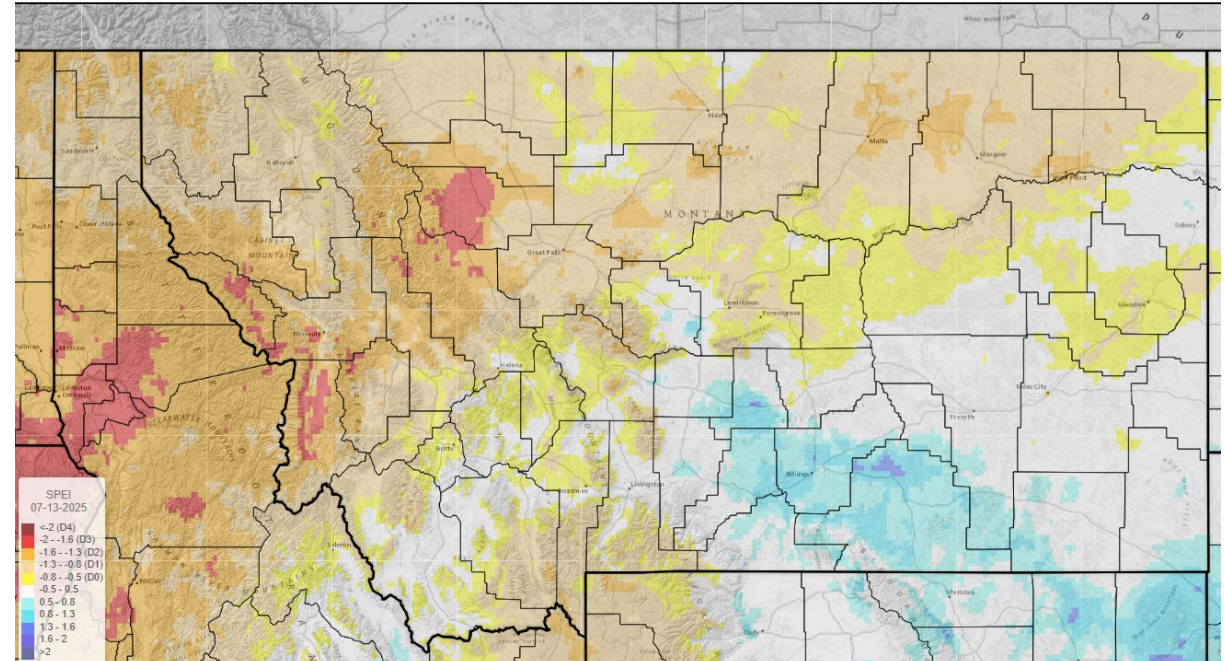
30-day

30 Day SPEI for 07-13-2025



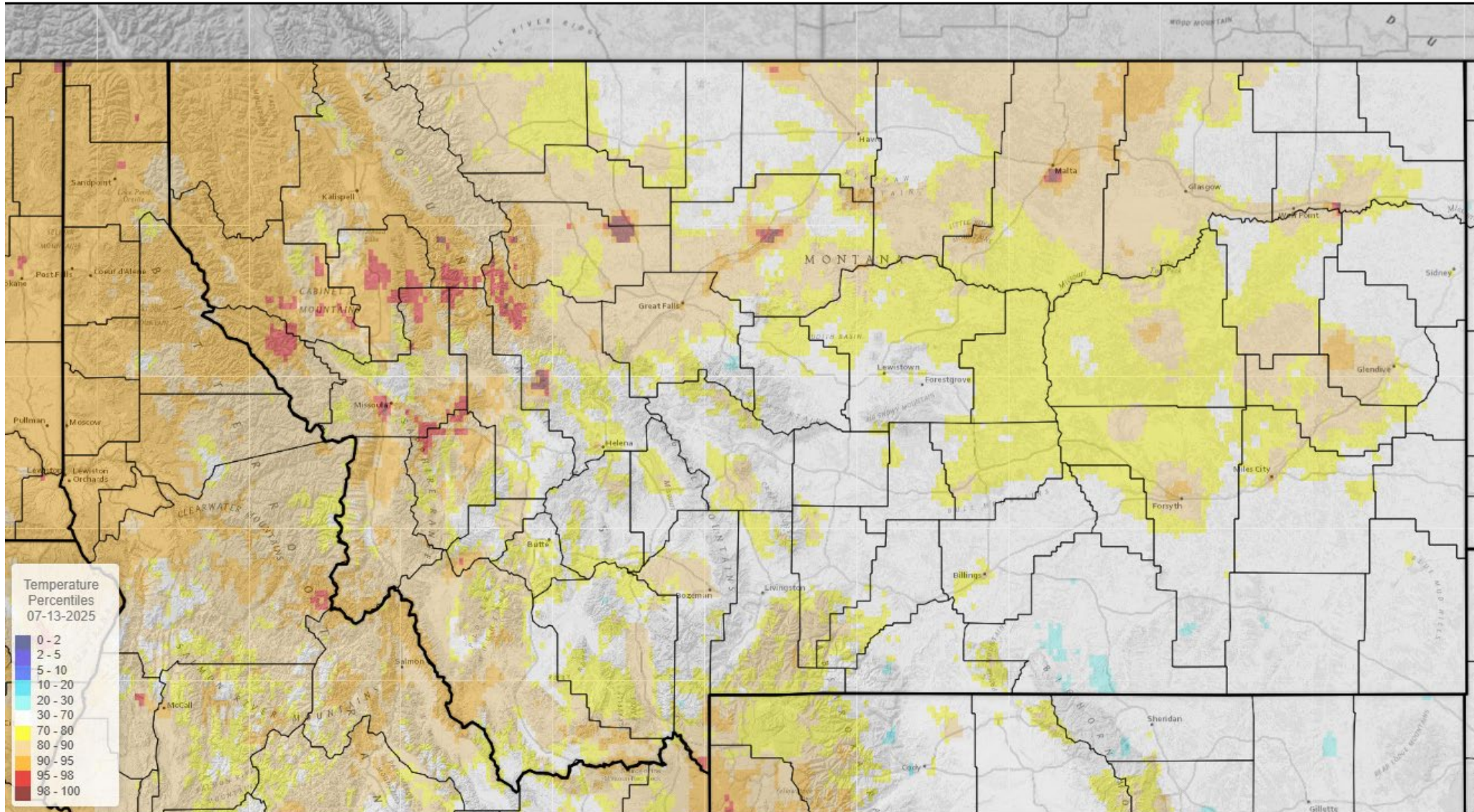
90-day

90 Day SPEI for 07-13-2025



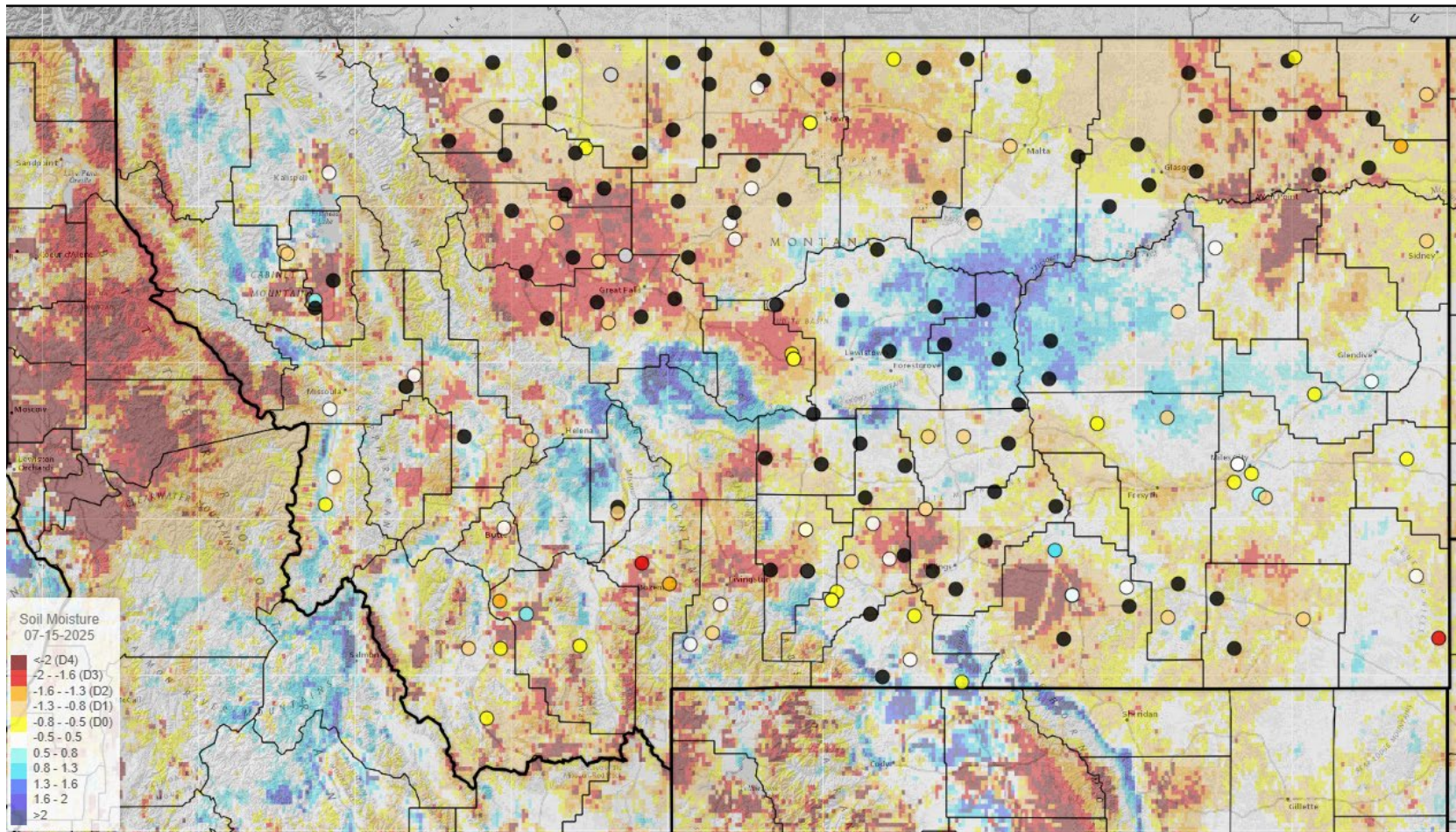
Temperature

90 Day Percentile for 07-13-2025

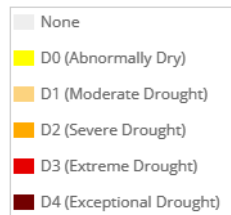
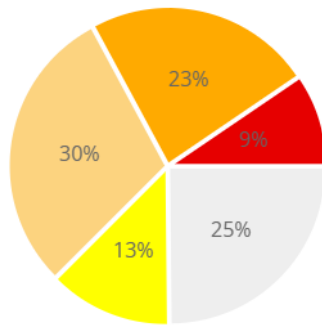
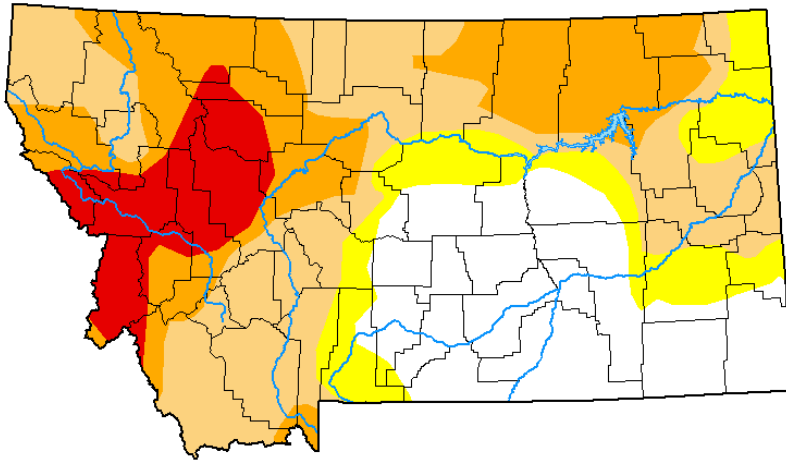


Montana Mesonet soil moisture stations

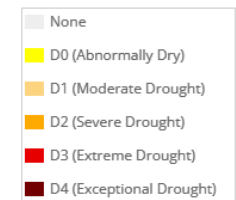
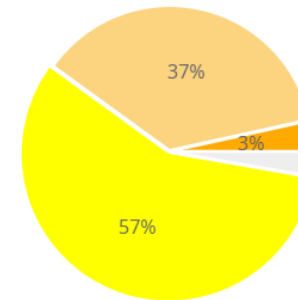
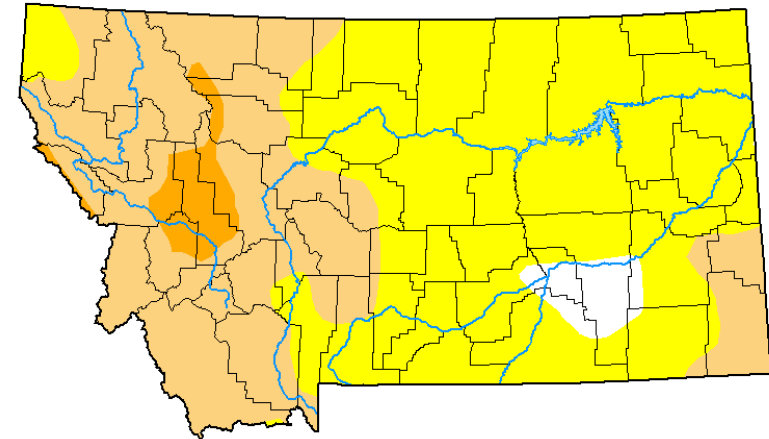
SPoRT Soil Moisture for 07-15-2025



July 8, 2025

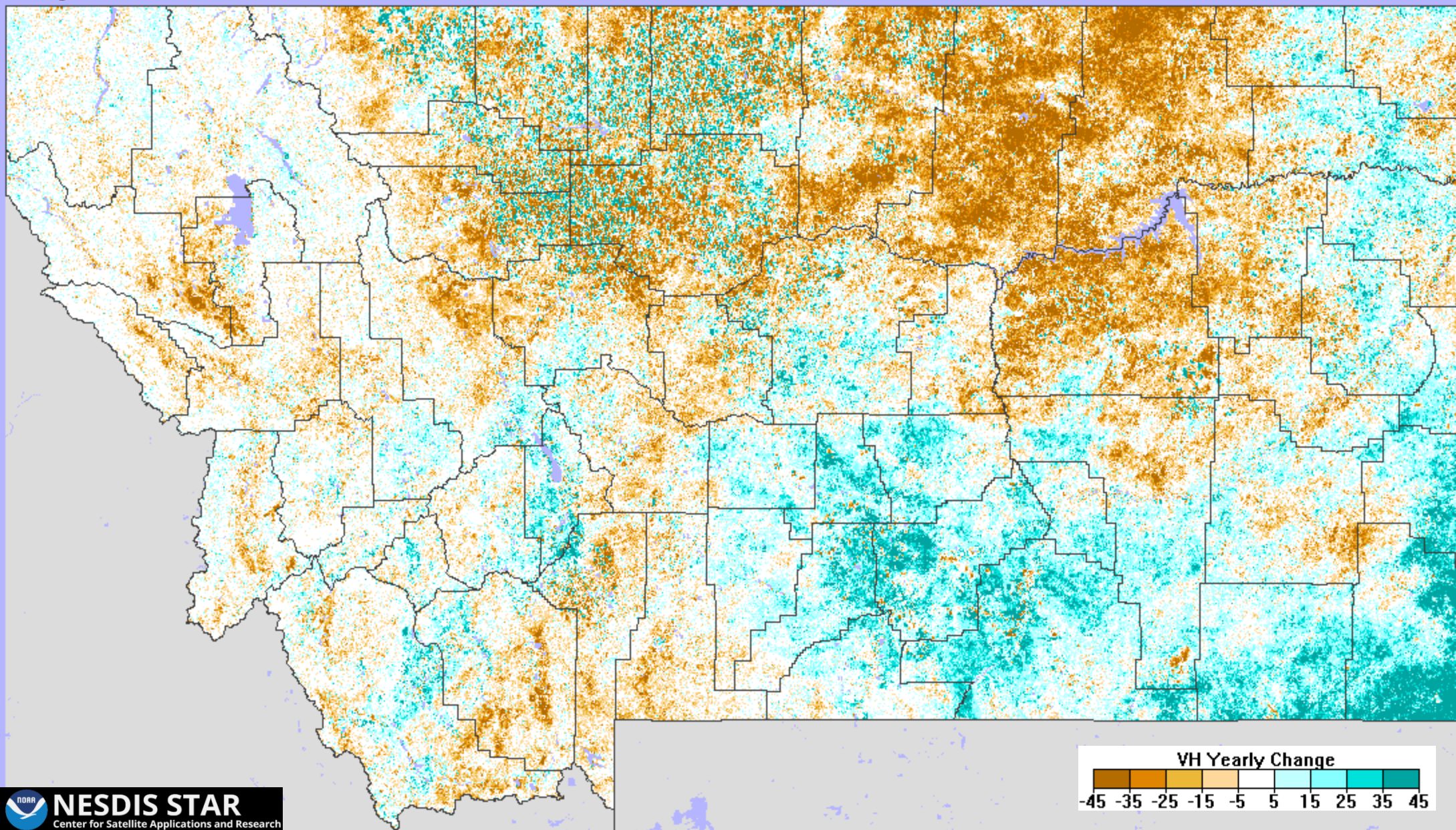


July 9, 2024



Vegetation Health

VH yearly change, July 8, 2025 (week 27)



Montana Drought Impact Reporter

Reports since October 1, 2024

7/15/2025: Daniels County

General to the area.
Experience: 20 or more years
Photo: No

7/14/2025: Blaine County

our hay yields are at about 35% of normal, grass for grazing is considerably less than normal, grass hoppers are back, we did not harvest some field due to material being too dry and small yield, there is NO sub moisture...we very much need rain!! I think its dry in my locality
Experience: 20 or more years
Photo: No

7/14/2025: Dawson County

The conditions are at least two or three counties widespread.
Experience: 20 or more years
Photo: No

7/14/2025: Sheridan County

Conditions are going backwards Crops benefited from rains in June - but heat since then is sapping ground moisture Water remains significantly below normal in soil/dugouts patchy storms have resulted in extremely variable conditions in small distances
From ND stateline heading west at least past highway 16
Experience: 20 or more years
Photo: No

7/14/2025: Sanders County

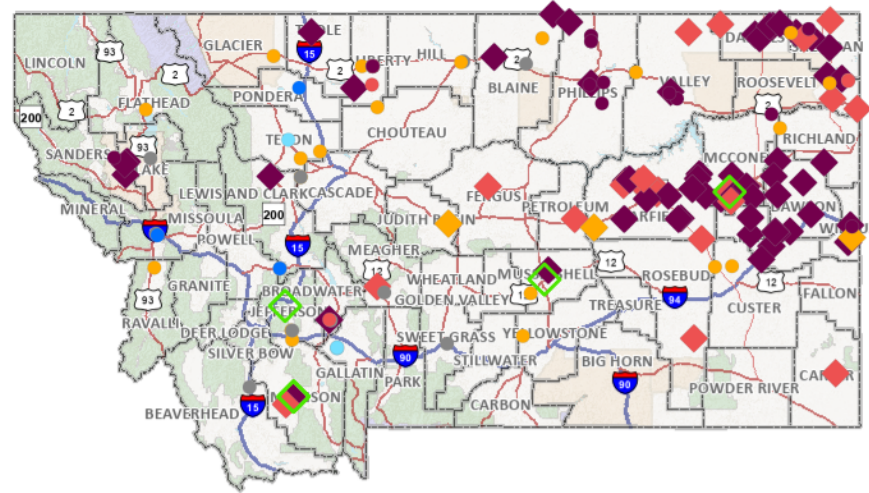
Very hot, dry, windy less than 2 inches of rain in last 3.5 months, where is the soil moisture monitoring station in our area? It must be broke if it is in our valley. Take a drive and come look for yourself. Well went dry added on 30 more feet to get stock water. Now sure how long that will last.
10 miles each direction North -South
Experience: 20 or more years
Photo: No

7/13/2025: Prairie County

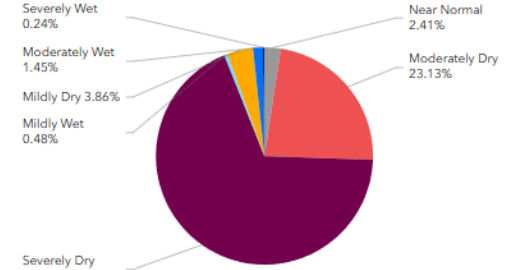
Very little rain, lots of wind high heat Miles city east to North Dakota an to Canada
Experience: 20 or more years
Photo: Yes

7/13/2025: Phillips County

This reservoir is located in the Saco hills which are south of Saco MT. In February I made a report through this very drought monitor and



How Wet or Dry is it?

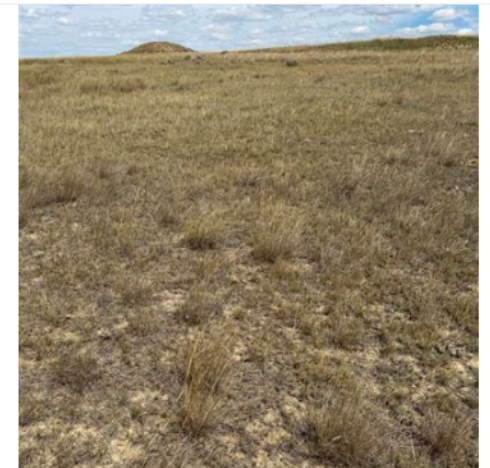


How Wet or Dry is it?

1 of 50

7/13/2025 - Garfield County

Description: Drought conditions are more severe than shown on the drought map. All counties in D2 should be at least D3 at a minimum.



Photos

Photo Viewer

Montana State Library | National Drought Mitigation Center, University of Nebraska

Powered by Esri

Overview Map

Photo Map

Impact Type Map

Crop Condition Map

Range Condition Map

All Years

All Photos

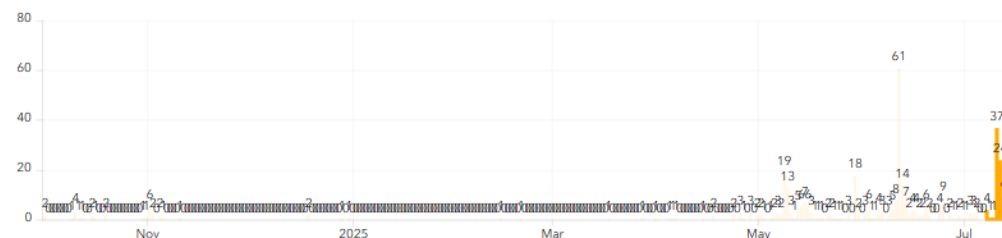
Number of Reports
in the Last 10 Days

85

Last 10 Days

Total

Number of Reports by Date



Reports by Date

Reports By County

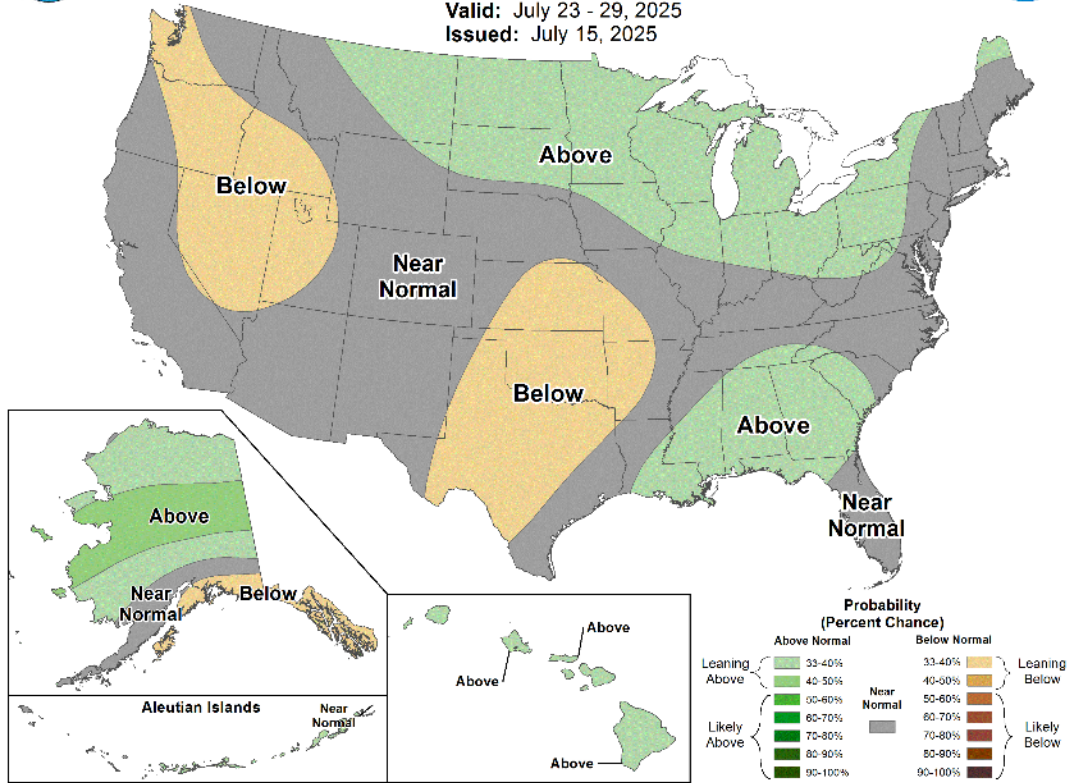
Photos by Date

Reports by Year



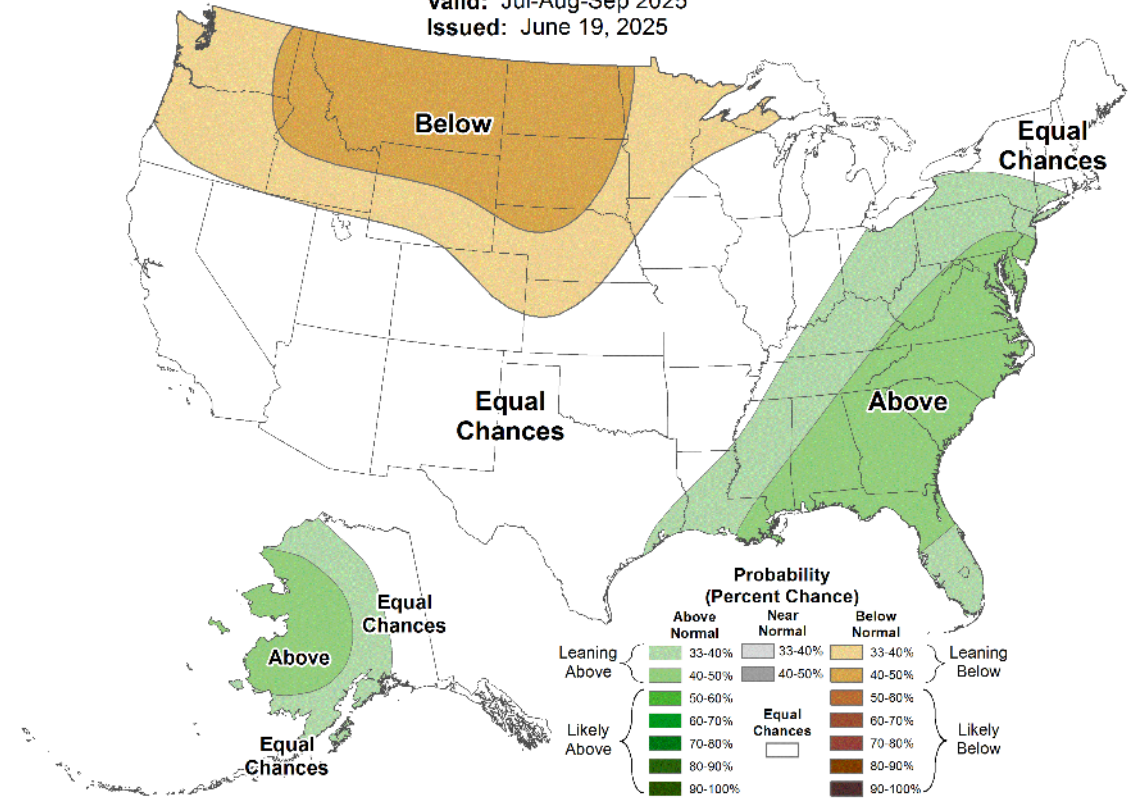
8-14 Day Precipitation Outlook

Valid: July 23 - 29, 2025
Issued: July 15, 2025



Seasonal Precipitation Outlook

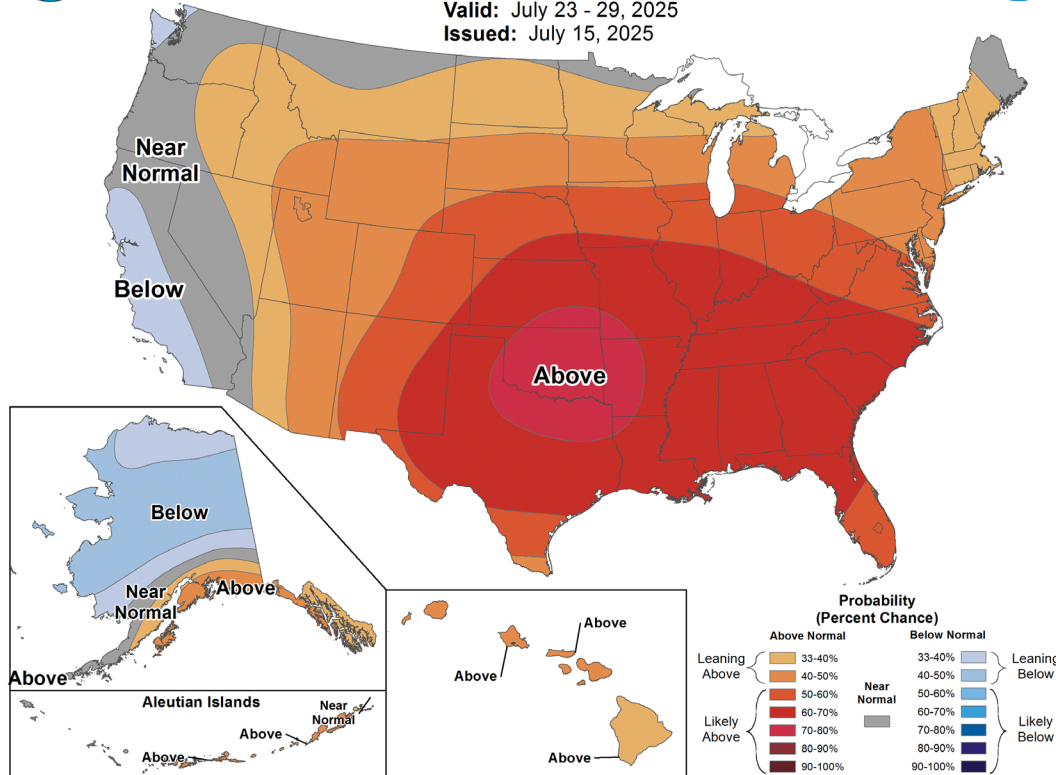
Valid: Jul-Aug-Sep 2025
Issued: June 19, 2025





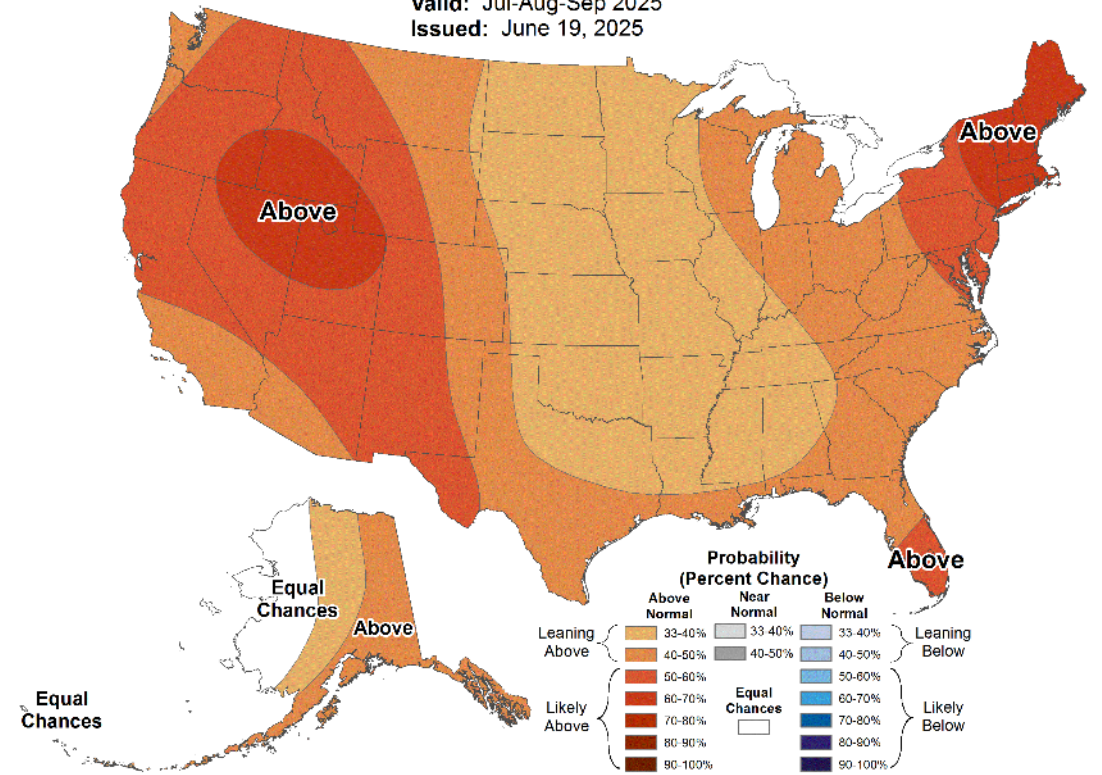
8-14 Day Temperature Outlook

Valid: July 23 - 29, 2025
Issued: July 15, 2025



Seasonal Temperature Outlook

Valid: Jul-Aug-Sep 2025
Issued: June 19, 2025



Key Takeaways

Locked in - Improvements to the drought map are unlikely to minimal until a season changing event in the Fall.

Biggest concerns are west (Ravalli, Sanders, and Front Range) northcentral (Valley, Phillips), and east (Prairie, Garfield, McCone)

Bright spots continue to be southcentral (approx. Billings, Stillwater County, northern Bighorn County)

Remaining summer storms will likely be spotty but beneficial locally.

Slight chance of above normal precipitation the second half of July; otherwise, precipitation and temperature Outlooks are unpromising for the remainder of the season.

Drought impact reports have picked up drastically. Keep them coming!

Thank you.
Questions? Discussion.

Troy Blandford
tblandford@mt.gov

