



July 2025

Wildfire Update Montana Drought and Water Supply Committee

Cory Calnan

Acting Chief

Montana DNRC

Fire Protection Bureau



Current Fire Activity

| Agency | Fires | Acres |
|------------------------|-------------|---------------|
| C&L | 461 | 5,747 |
| USFS | 160 | 2,778 |
| BIA | 228 | 1,516 |
| BLM | 35 | 3,609 |
| FWS | 12 | 881 |
| DNRC | 108 | 2,002 |
| NPS | 2 | 0.01 |
| 2025 YTD Totals | 1006 | 16,537 |
| <i>2024</i> | <i>892</i> | <i>85,063</i> |

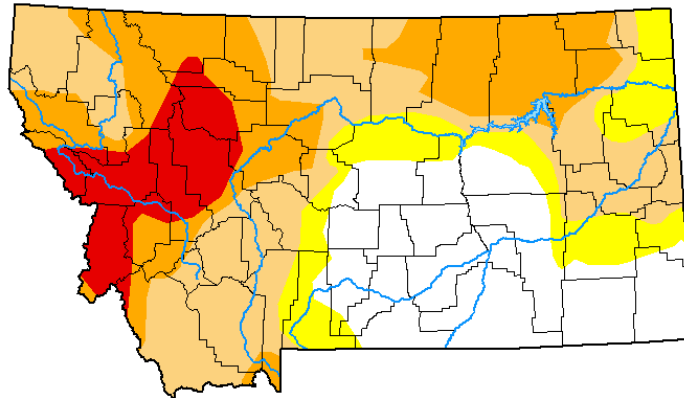


- National Preparedness Level 4
- Northern Rockies Preparedness Level 2
 - 32 Aircraft
 - 10 Handcrews
 - 37 Engines
- Very successful initial attack efforts to date
- Incidents of note:
 - Sawlog (USFS)
 - Banana Lake (DNRC)
 - Hilger Valley (DNRC)
 - Jericho (USFS)
 - Wilder (BLM/DNRC/USF&W)
 - Miller Creek (BLM/DNRC/Custer County)
 - Garnet Mountain (DNRC)

Factors - Drought and Vegetation

U.S. Drought Monitor
Montana

July 8, 2025
(Released Thursday, Jul. 10, 2025)
Valid 8 a.m. EDT



Intensity:

- None
- D0 Abnormally Dry
- D1 Moderate Drought
- D2 Severe Drought
- D3 Extreme Drought
- D4 Exceptional Drought

The Drought Monitor focuses on broad-scale conditions. Local conditions may vary. For more information on the Drought Monitor, go to <https://droughtmonitor.unl.edu/About.aspx>

Author:

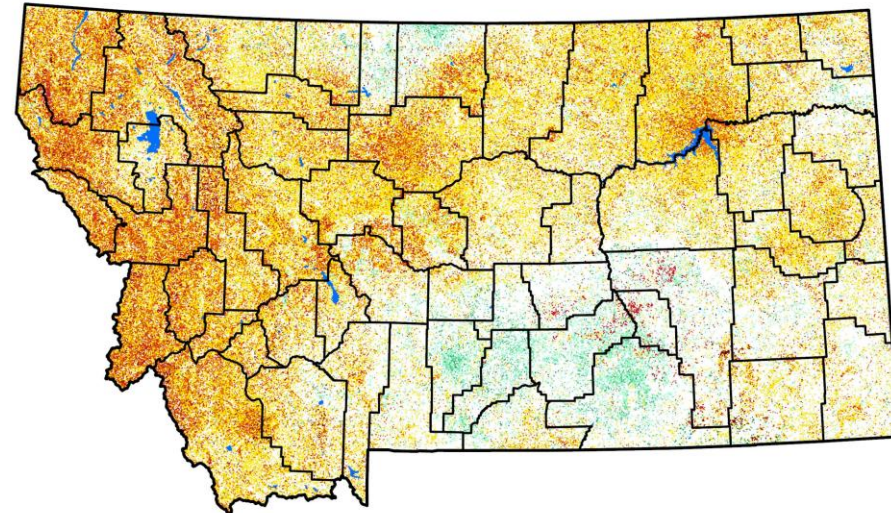
Brad Pugh
CPC/NOAA



droughtmonitor.unl.edu

Vegetation Drought Response Index
Complete: Montana

July 13, 2025

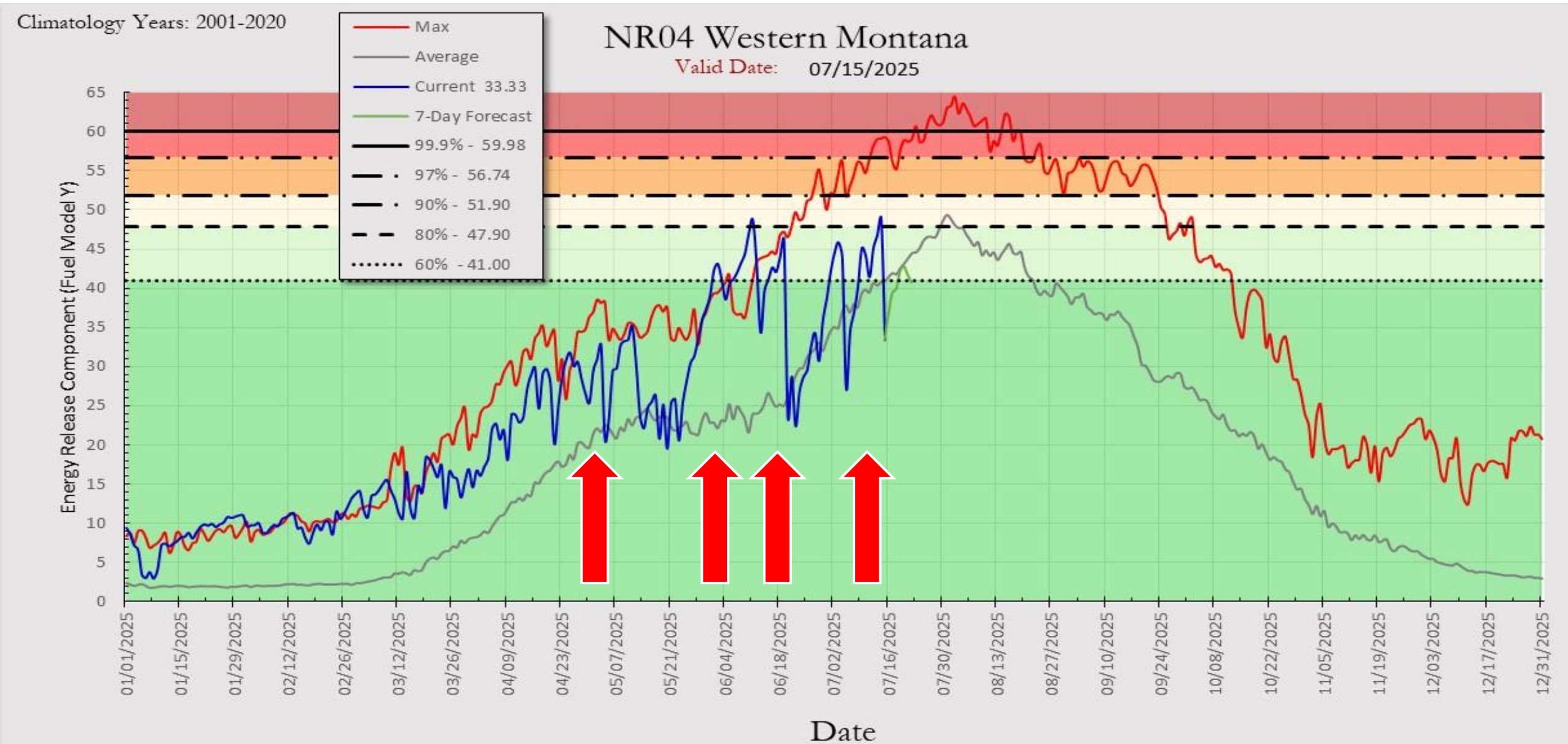


Vegetation Condition

- Extreme Drought
- Severe Drought
- Moderate Drought
- Pre-drought stress
- Near Normal
- Unusually Moist
- Very Moist
- Extreme Moist
- Out of Season
- Water



Factors – Fuels & Energy Release Component

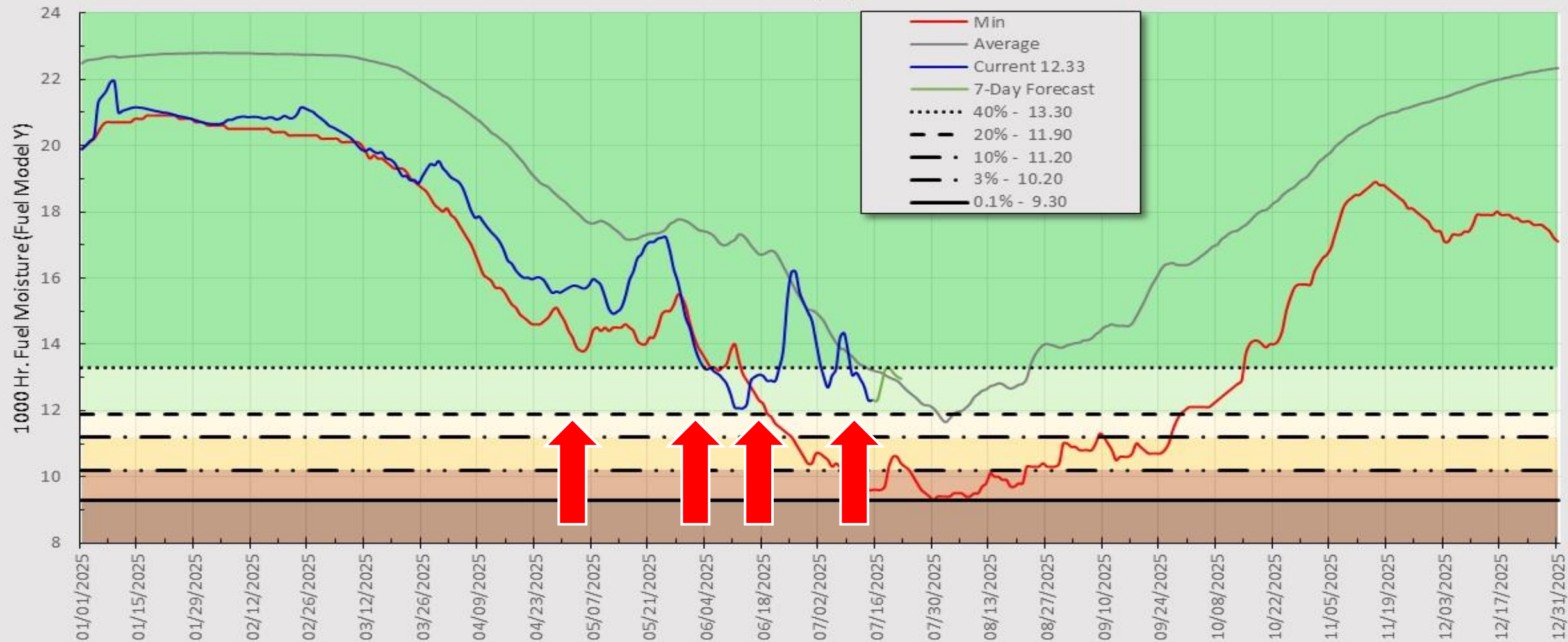


Factors – Fuels & 1000 Hour Fuel Moisture

Climatology Years: 2001-2020

NR04 Western Montana

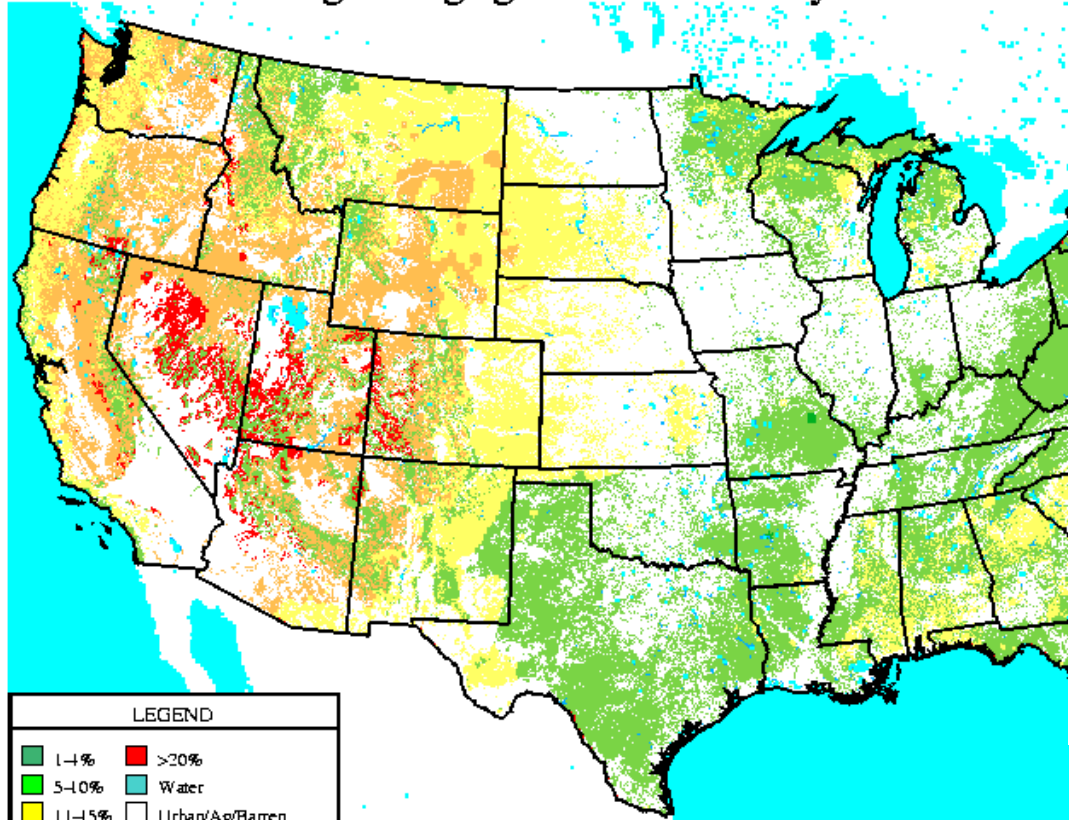
Valid Date: 07/15/2025





Lightning Efficiency

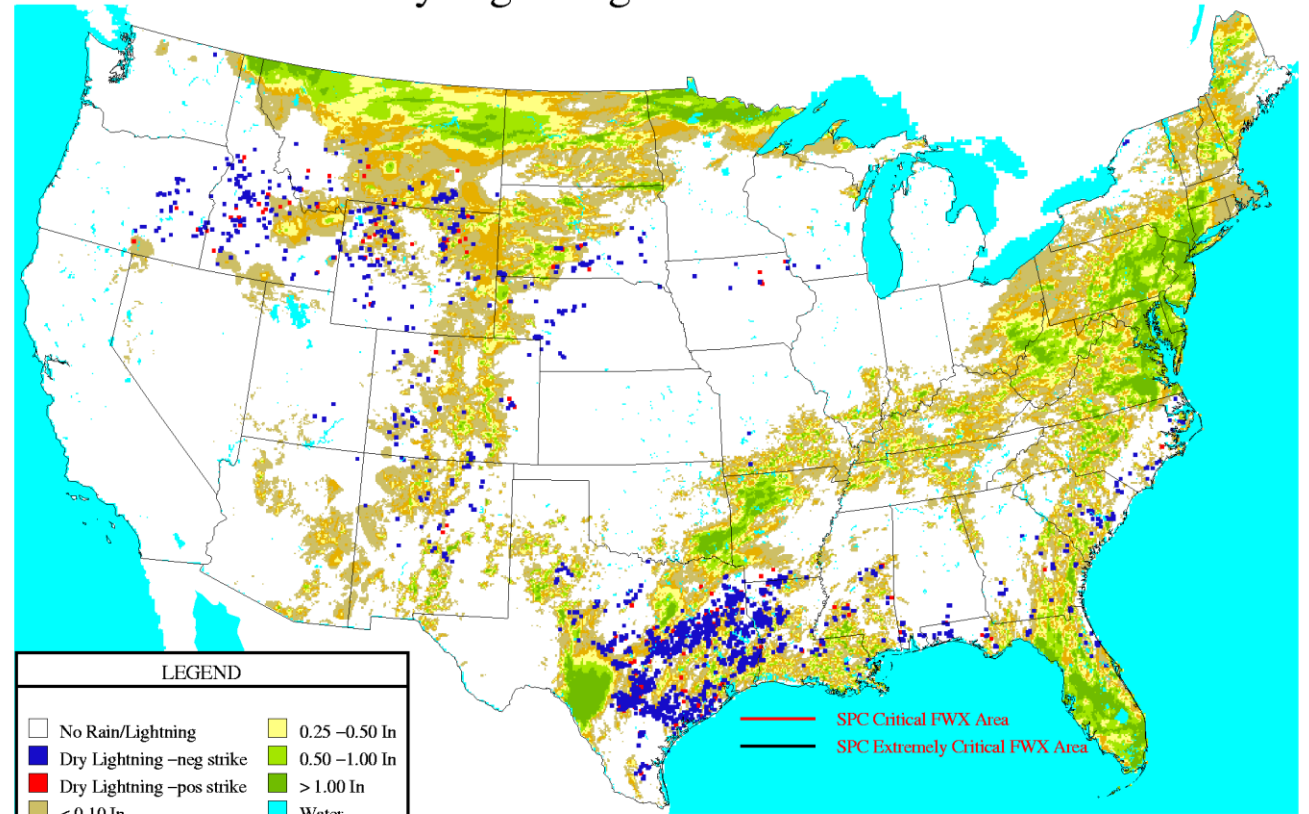
Lightning Ignition Efficiency: 15-Jul-25



WFAS-MAPS Graphics National Interagency Fire Center Boise,ID



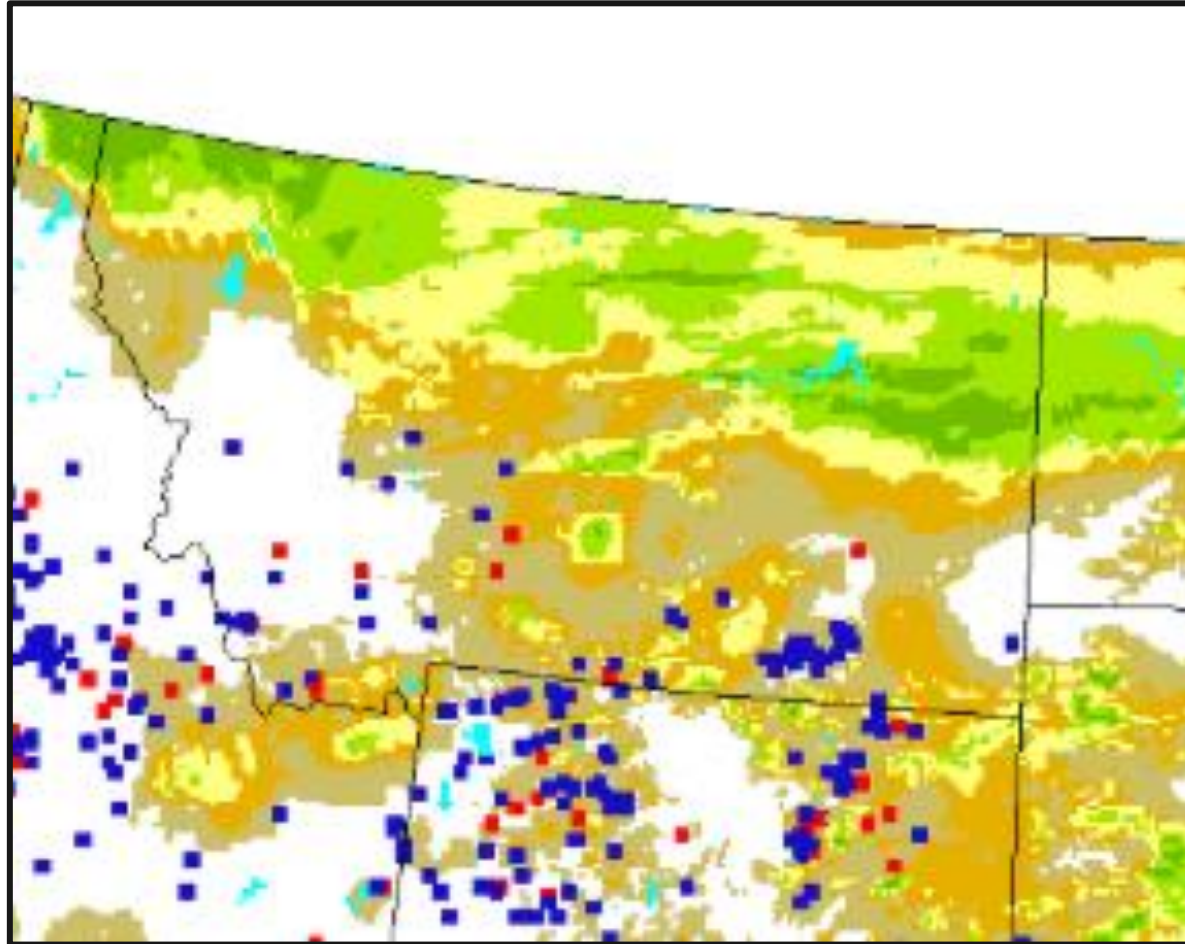
Observed Dry Lightning/Estimated Rain: 15-Jul-25



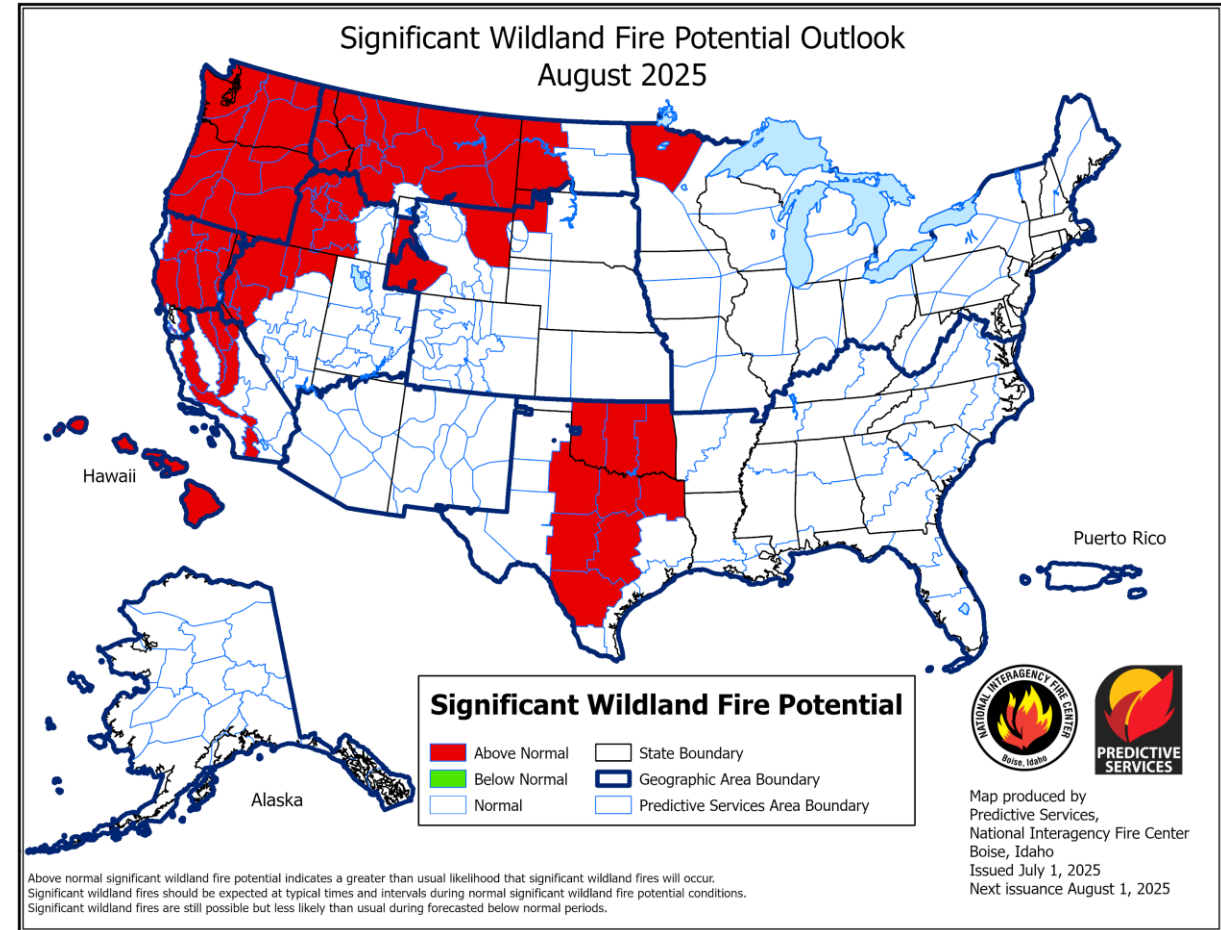
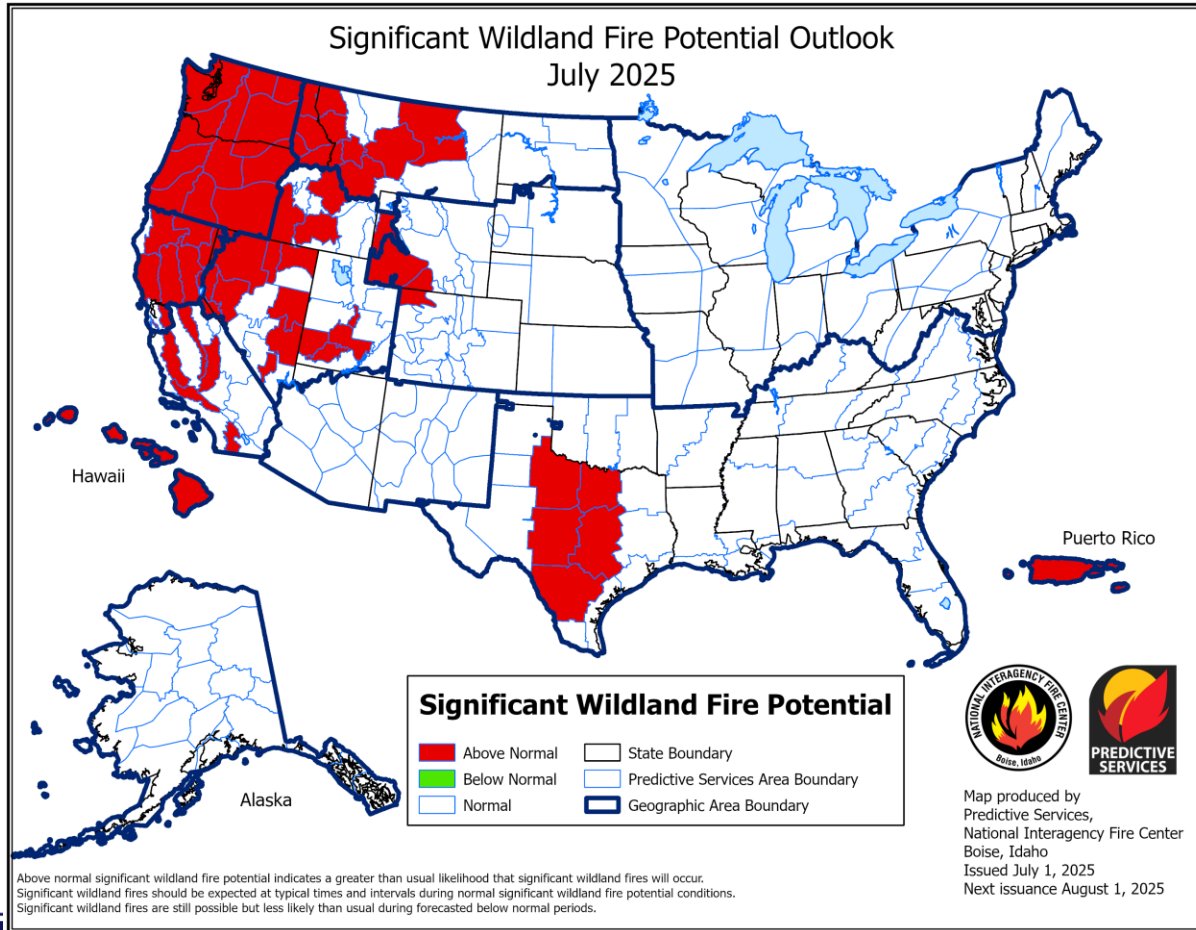
WFAS-MAPS Graphics Missoula Fire Lab Research Missoula,MT



Lightning Efficiency

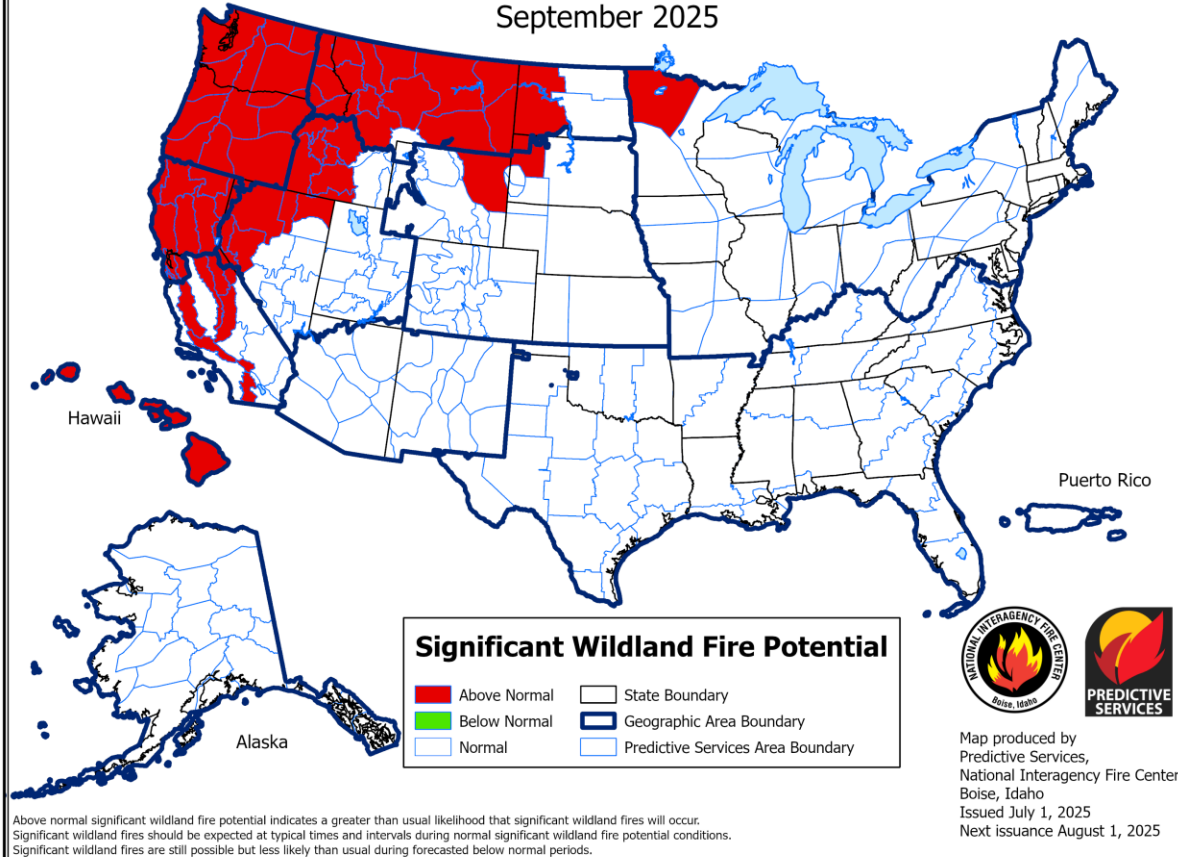


Outlook – July & August

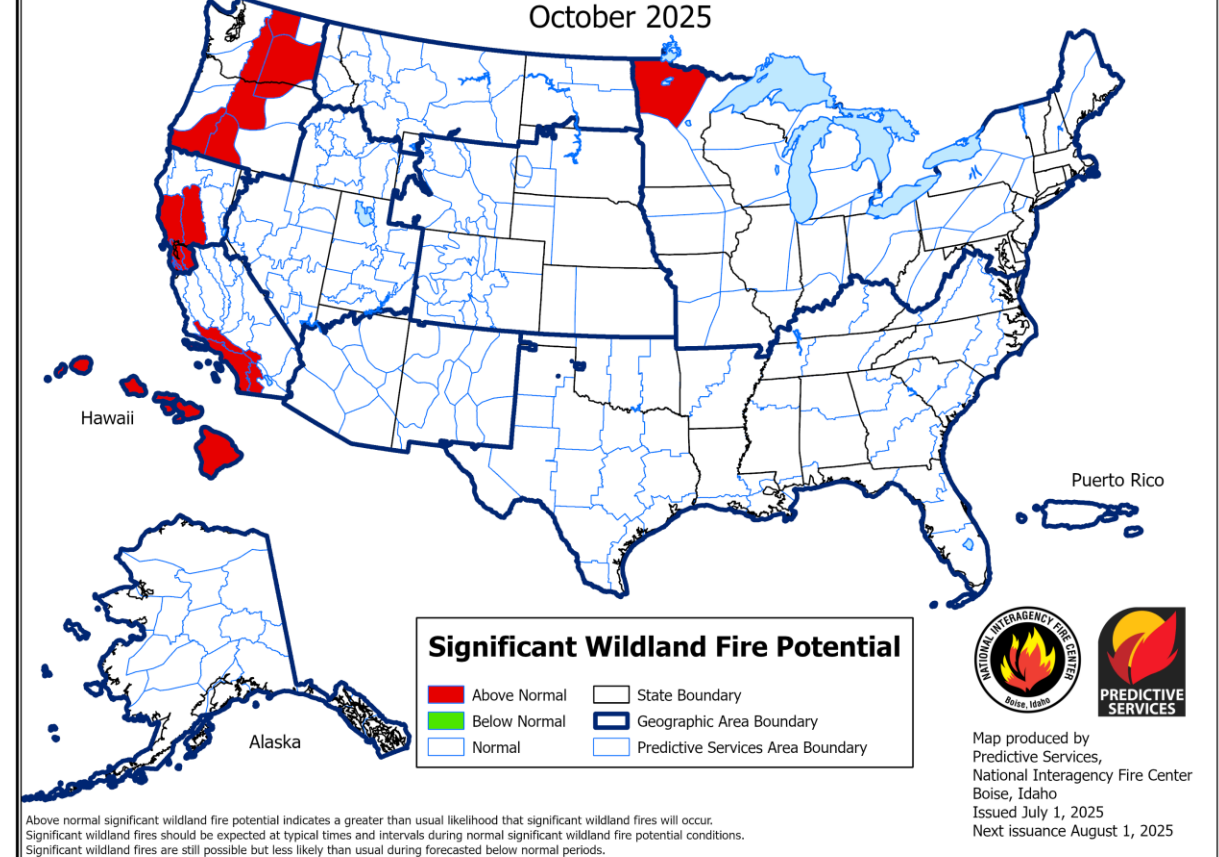


Outlook – September & October

Significant Wildland Fire Potential Outlook
September 2025



Significant Wildland Fire Potential Outlook
October 2025



Coordination and Preparedness

- **66 DNRC Engines Staffed**
- **5 MT-205 Helicopters & 3 Fixed Wing Detection Platforms**
- **Increased Preparedness Assets via HB 883**
 - **2 Large (Type 1) Helicopter, 2000-gallon fixed tank**
 - **Two 20-person hand crews**
 - **Incident Awareness and Assessment Aircraft**
 - **Several other resources augmenting existing capacity**



Increased Preparedness Capacity



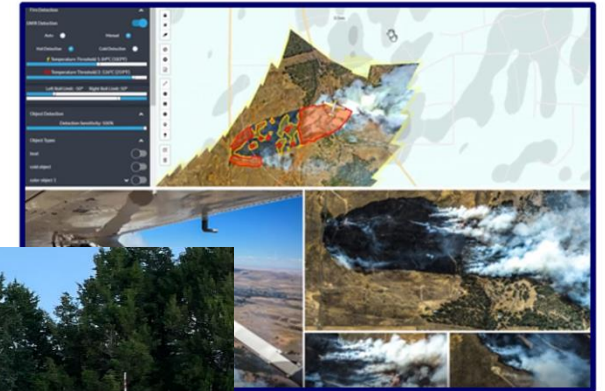
Increased Prep. Projects FY25/26



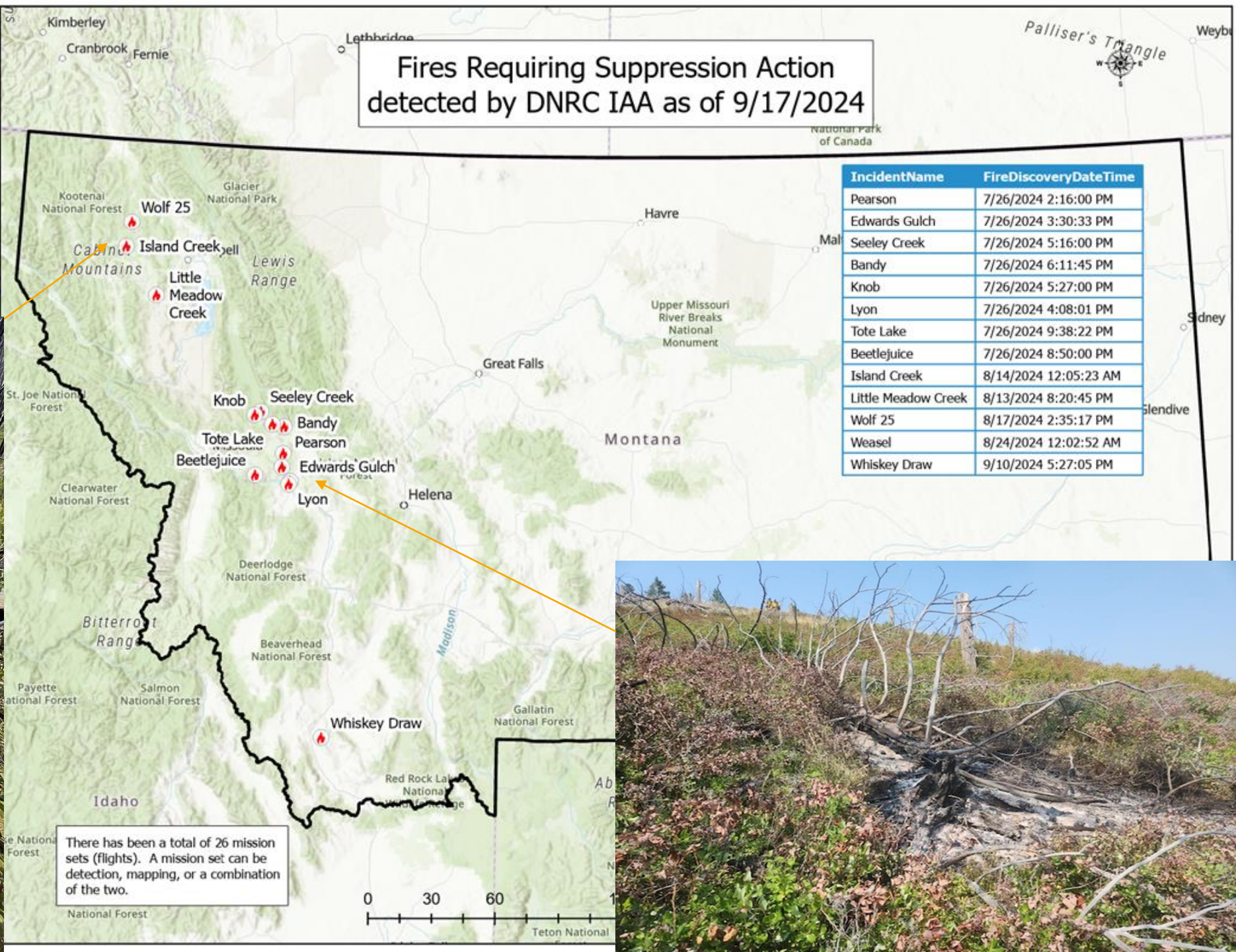
Cessna-T206HD



Overwatch TK-8



Incident Awareness and Assessment Detection Flights



Additional Resources

Learning to live with fire is critical to a safe and healthy environment and community.

MTFireInfo.org is dedicated to helping you, as a Montanan, learn how to live better with wildfire.



Know Before You Go

Restrictions

Check for fire restrictions in your area.

Explore



Current Fire Info

Check for current wildfires in Montana.

Explore



Smoke Preparedness

View current air quality forecasts and learn how to...

Explore



Preparing for Wildfire

Learn how to prepare for evacuation, smoke and how to..

Explore



Thank You!

Cory Calnan

Acting Chief – DNRC Fire Protection Bureau

406-788-7718 ccalnan@mt.gov

