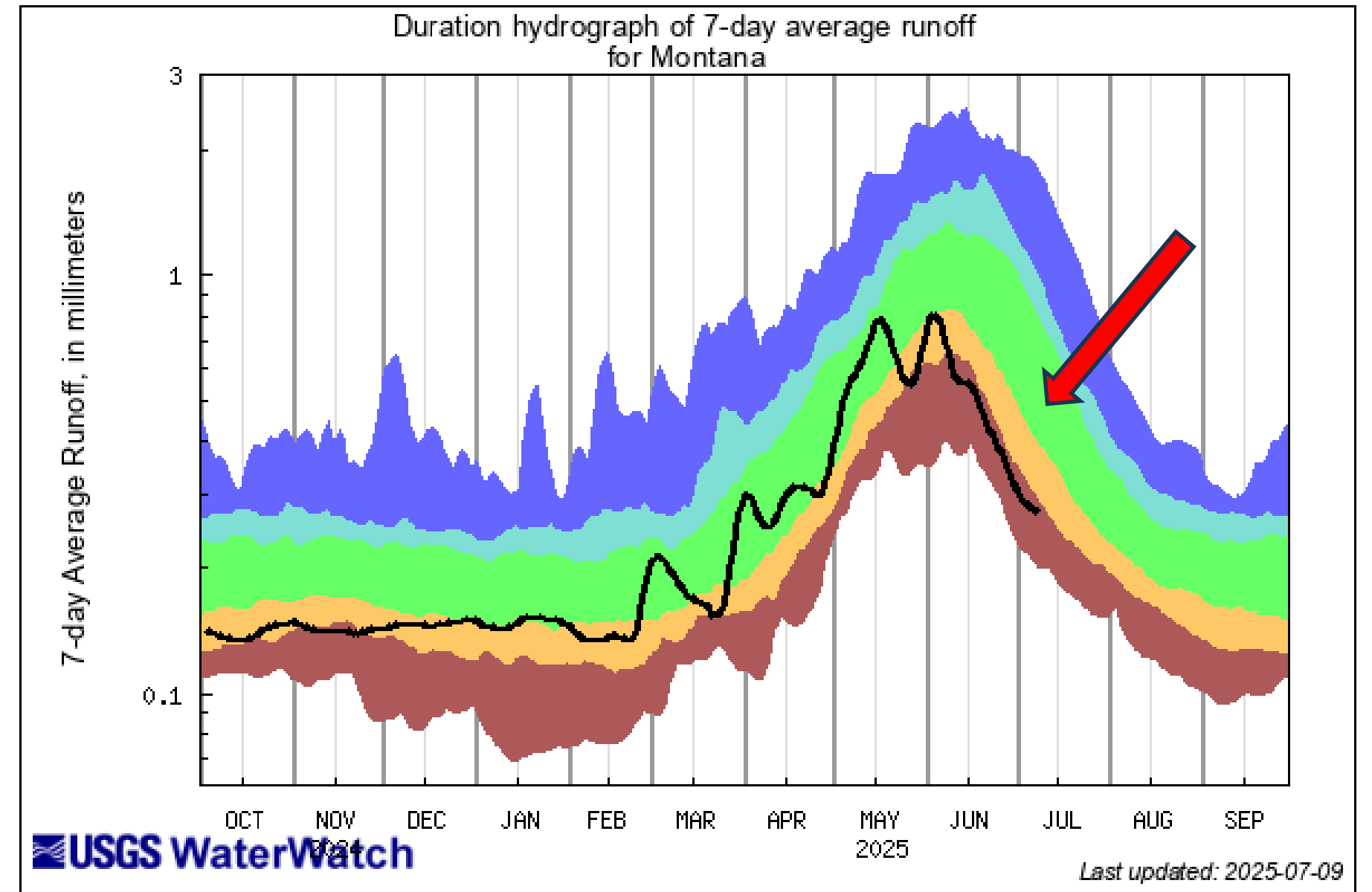


MONTANA STREAMFLOW CONDITIONS

**Drought and Water Supply Advisory Committee Meeting
July 16, 2025**

WHERE SHOULD WE BE IN THE WATER YEAR?

- Good water supplies
- Much higher flows



Explanation - Percentile classes					Runoff
lowest-10th percentile	10-24	25-75	76-90	90th percentile-highest	
Much below normal	Below normal	Normal	Above normal	Much above normal	

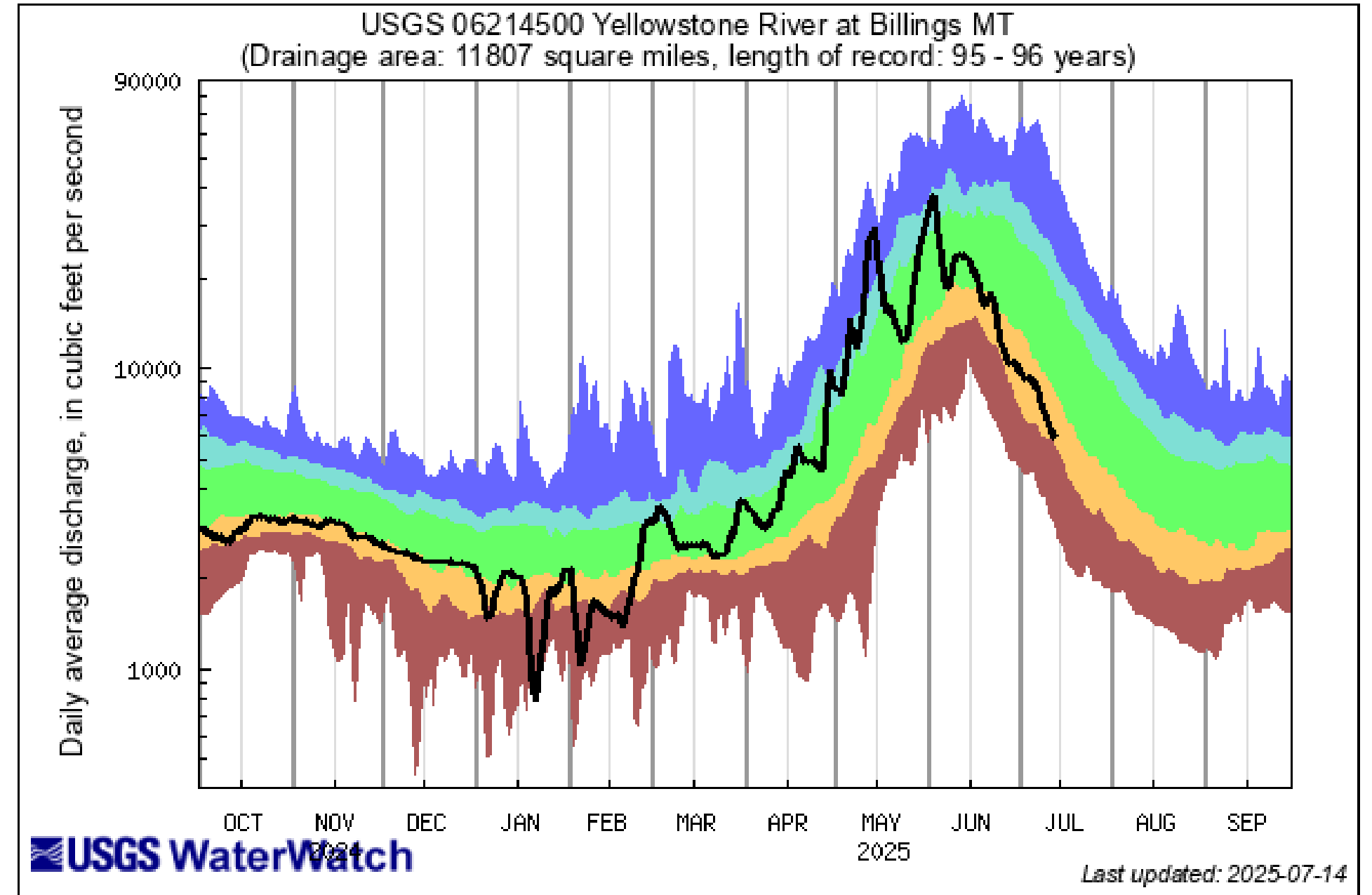
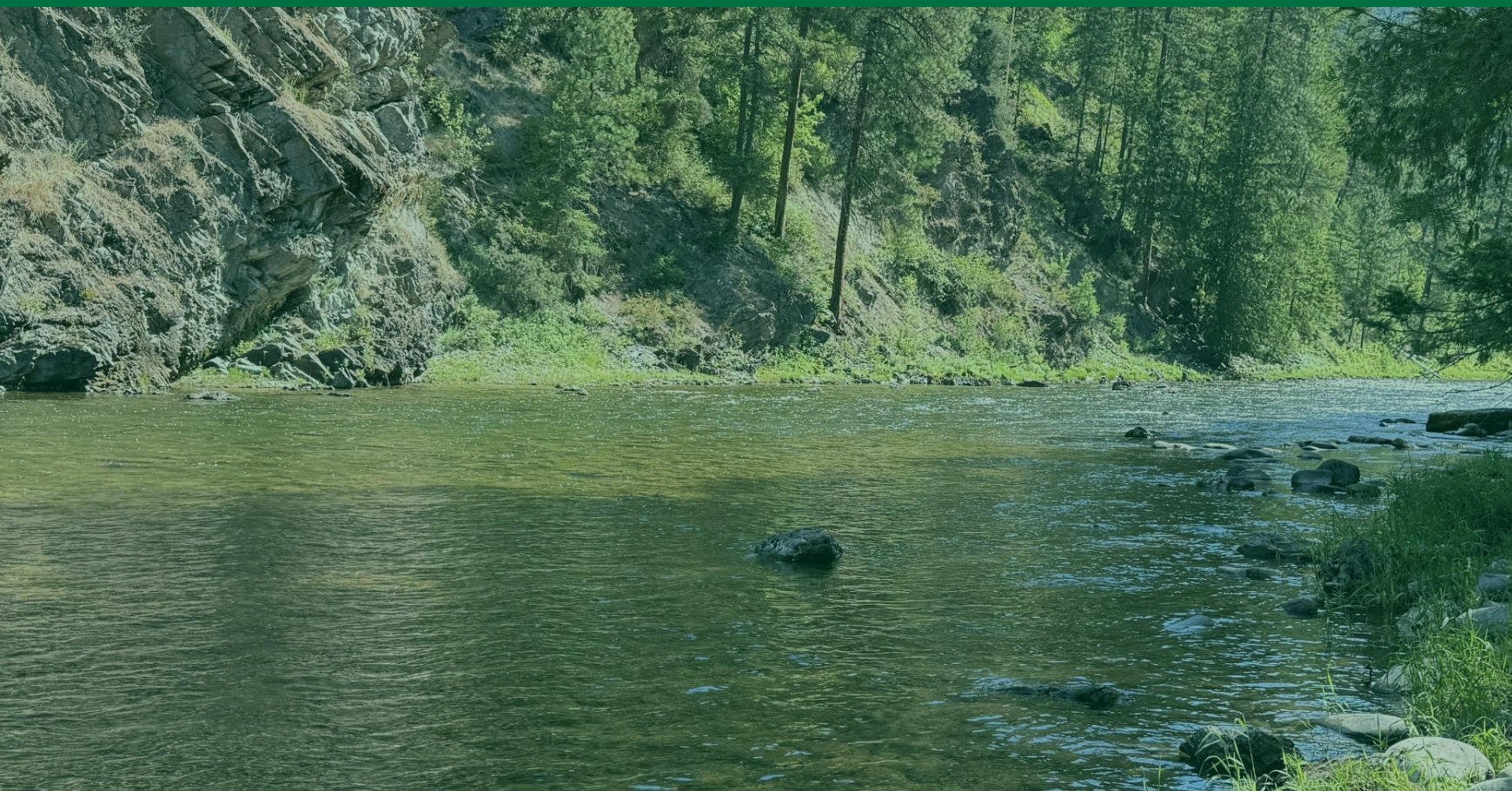
Preliminary Information-Subject to Revision. Not for Citation or Distribution.

Source: USGS WaterWatch Area-Based Runoff Duration Hydrograph

<http://waterwatch.usgs.gov/>

WHERE WE ARE IN THE WATER YEAR?

- Runoff has come (early) and gone.
- Receding quickly to “mid summer” conditions.
- Droughty.



Explanation - Percentile classes					Flow
lowest-10th percentile	10-24	25-75	76-90	90th percentile-highest	
Much below normal	Below normal	Normal	Above normal	Much above normal	

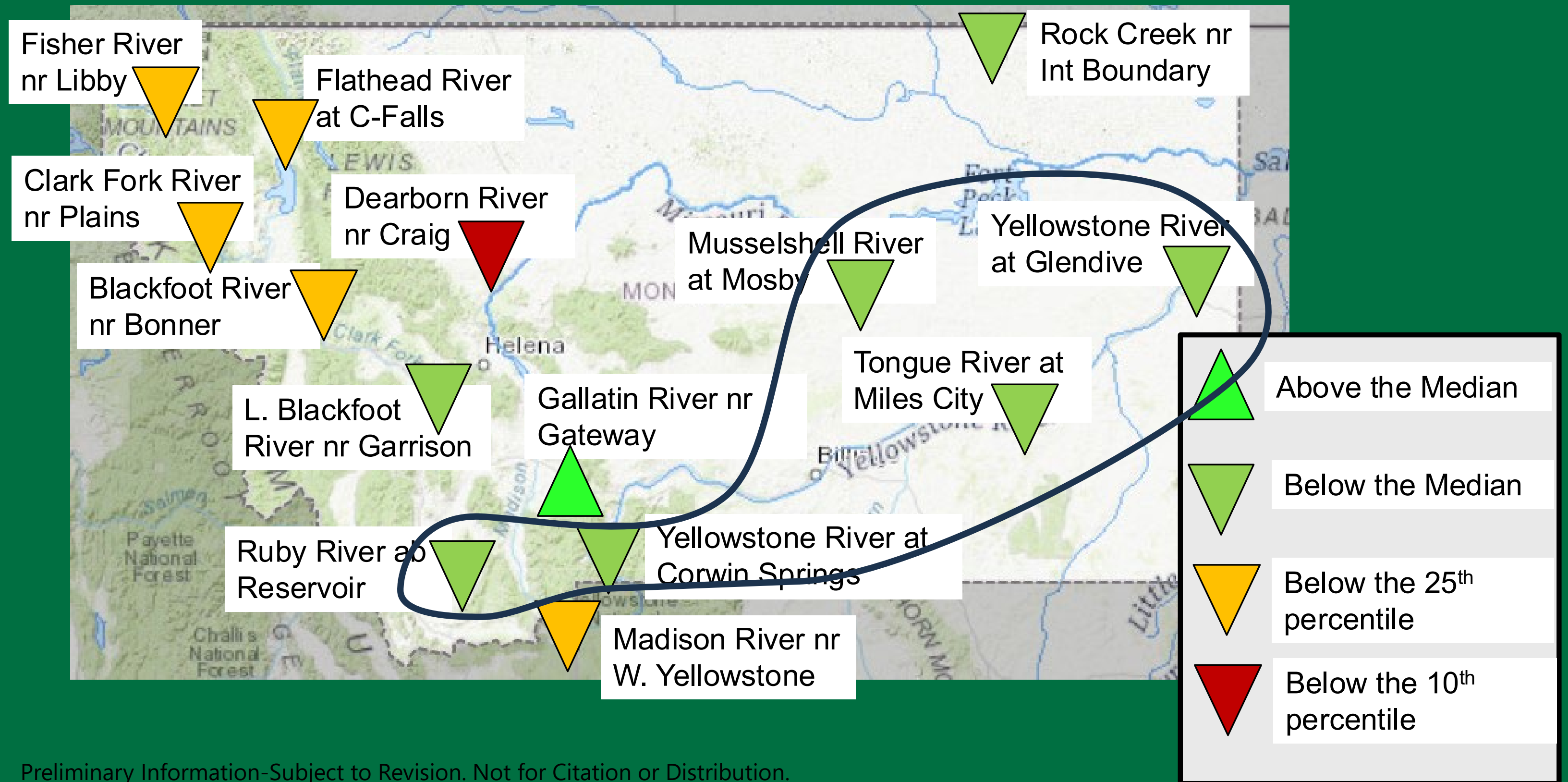
Preliminary Information-Subject to Revision. Not for Citation or Distribution.

Source: USGS WaterWatch Area-Based Runoff Duration Hydrograph

<http://waterwatch.usgs.gov/>

APR 1, 2025- JULY 10, 2025: STREAMFLOW

(Cumulative flow, compared to period of record statistics)

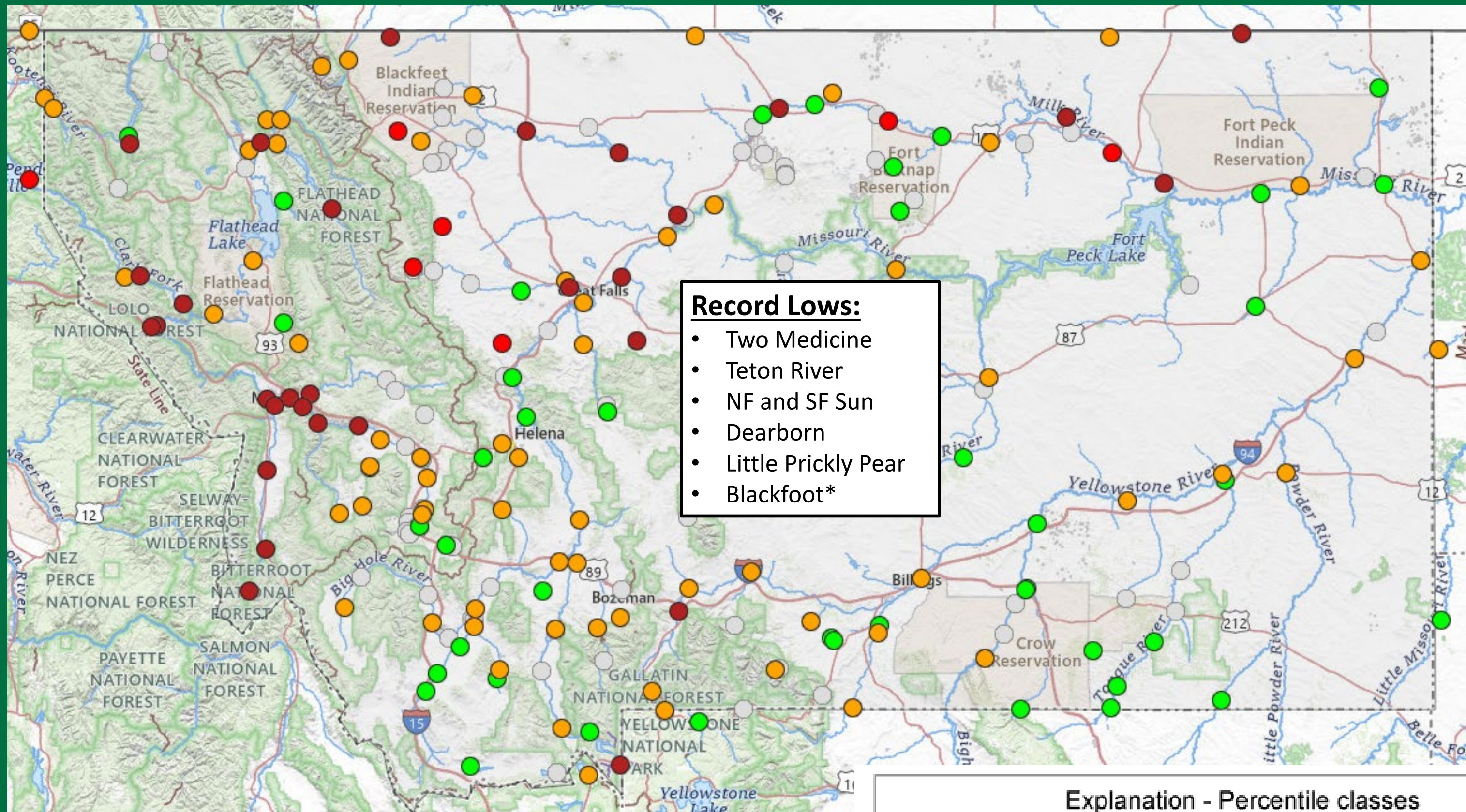


Preliminary Information-Subject to Revision. Not for Citation or Distribution.

Source: USGS Water Data for the Nation

<https://waterdata.usgs.gov/>

SEVEN DAY AVERAGE STREAMFLOW



Preliminary Information-Subject to Revision. Not for Citation or Distribution.

Source: USGS WaterWatch , Seven Day Average Streamflow

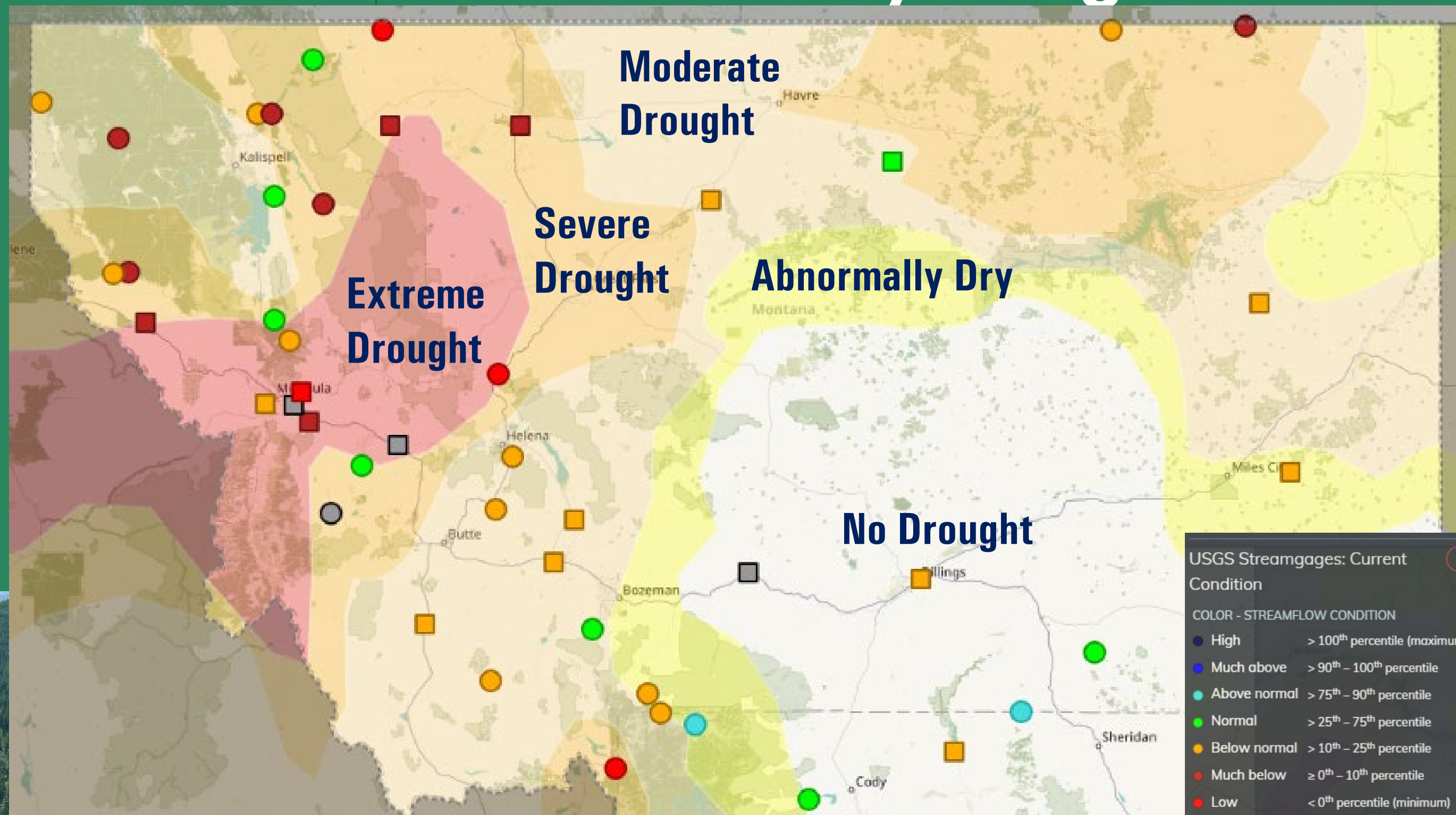
<http://waterwatch.usgs.gov/>

Explanation - Percentile classes							
Low	<10	10-24	25-75	76-90	>90	High	Not-ranked
	Much below normal	Below normal	Normal	Above normal	Much above normal		

WY-MT DROUGHT VIEWER- 7 Day Avg

Sentinel Gages ○

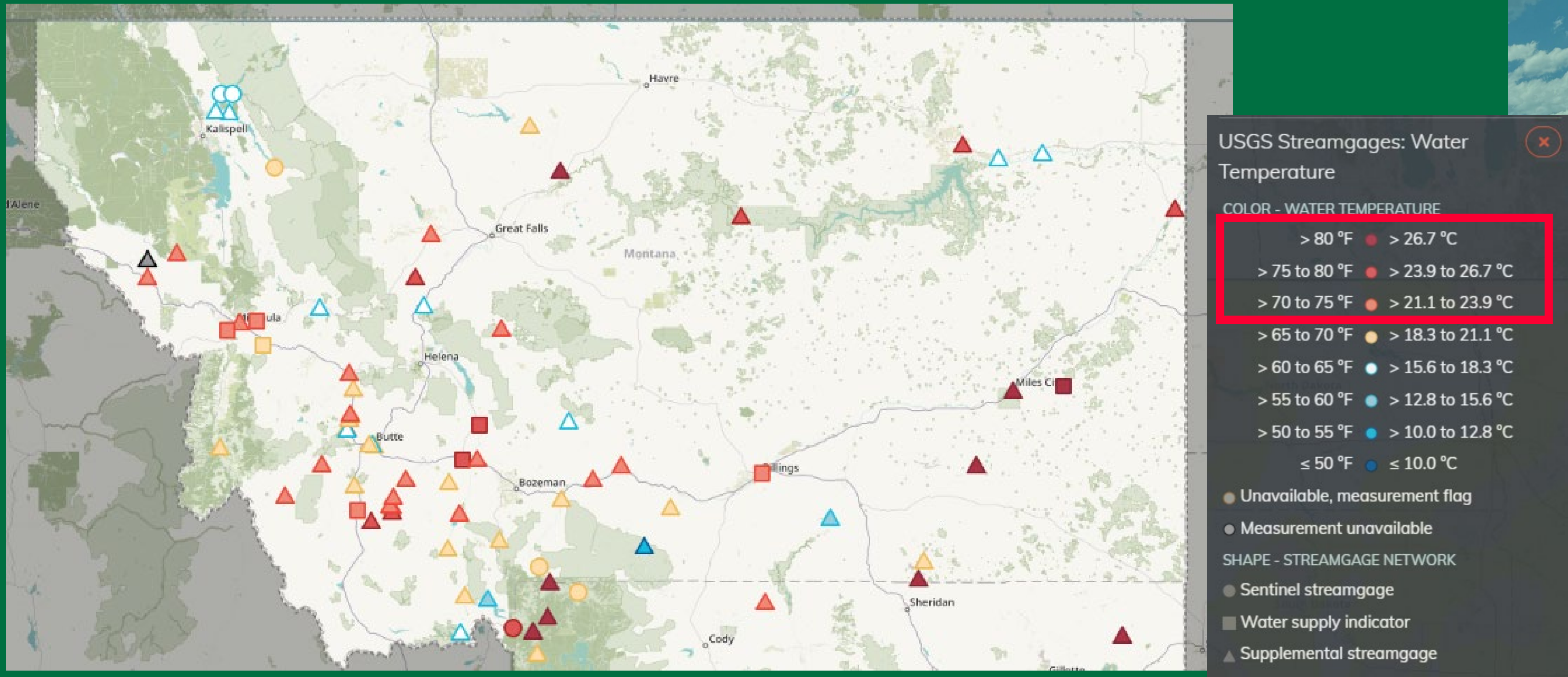
Water Supply
Indicator Gages □



Preliminary Information-Subject to Revision. Not for Citation or Distribution
Source: USGS WY-MT Drought Viewer
<https://webapps.usgs.gov/wy-mt-drought-viewer/>

WY-MT DROUGHT VIEWER

3pm Temperature (7/14/25)

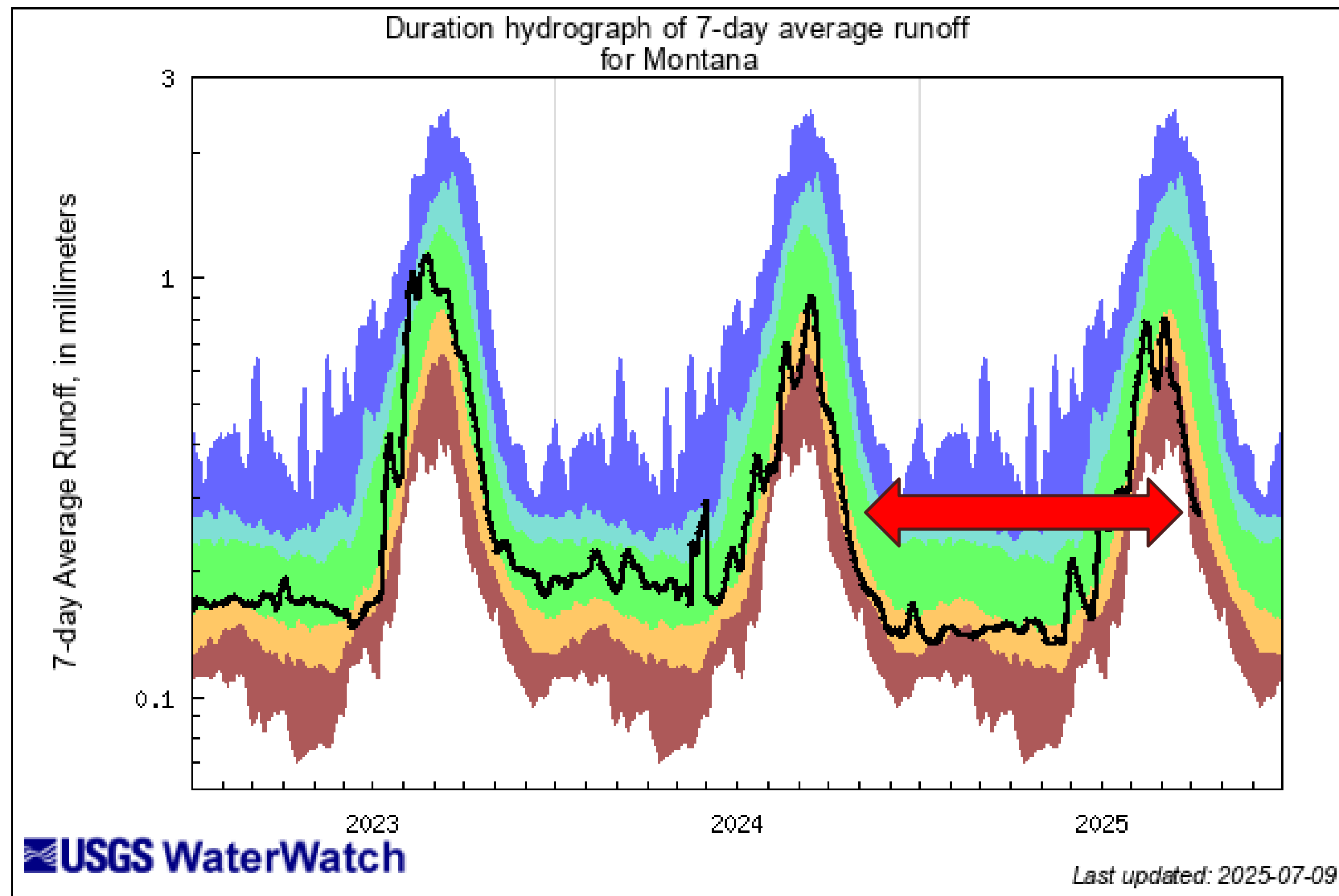








67 sites collecting water temperature data

Preliminary Information-Subject to Revision. Not for Citation or Distribution
Source: USGS WY-MT Drought Viewer
<https://webapps.usgs.gov/wy-mt-drought-viewer/>

PROLONGED DROUGHT

- Base Flows
- Expect low water supply conditions.
- Until the weather changes.



Explanation - Percentile classes					
					
lowest-10th percentile	10-24	25-75	76-90	90th percentile-highest	Runoff
Much below normal	Below normal	Normal	Above normal	Much above normal	



<https://webapps.usgs.gov/wy-mt-drought-viewer/>

Contact/Links

Wyoming-Montana Water Science Center

- Aaron Fiaschetti- Hydrologist
(afiaschetti@usgs.gov)
- (406) 457-5927



<https://www.usgs.gov/centers/wy-mt-water>



Photos by Brett Price, U.S. Geological Survey
Stillwater River Kalispell
Clark Fork River Paradise
Clark Fork River above Missoula
Yaak River